

# The Ampfield Messenger



*The Parish Magazine of  
St. Mark Ampfield*

**November 2024**

**Vol 74 Issue 11 £1**

**[www.acnb-church.org](http://www.acnb-church.org)**

# The Parish Church of St Mark, Ampfield

*Our vision: To be channels of God's love in the world*

## Ministry Team

**Rev. Vanessa Lawrence, Vicar** Tel: 023 80 737617

Email: [vicar@acnb-church.org](mailto:vicar@acnb-church.org)

**Rev. Ann Devereux, Curate** Tel: 02380 737617

**Mrs. Sally Kerson, Lay Minister and Office Administrator**

Tel: 02380 737617

**Mr. Jonathan DeVile, Lay Minister** Tel: 02380 736522

**Beth Robertson, Children and Families Worker**

For any enquiries about baptisms, weddings or churchyards please contact the parish office, telephone no: 023 8073 7617

Email us at: [office@acnb-church.org](mailto:office@acnb-church.org)

Website: [www.acnb-church.org](http://www.acnb-church.org)

Facebook: [www.facebook.com/acnbchurch/](http://www.facebook.com/acnbchurch/)

The office is staffed 9 - 12 noon, Monday, Wednesday & Friday.

***Please let us know if you have any news of those who are sick, in trouble, leaving or about to arrive.***

**Churchwardens:** Mr. Mark Braund Tel: 01489 860218

Email: [markb@acnb-church.org](mailto:markb@acnb-church.org)

Mr. Phil Budden Tel: 07799 435 715

Email: [philb@acnb-church.org](mailto:philb@acnb-church.org)

**Secretary PCC** Jennie Edwards Tel: 02380 365041

Email: [jenniee@acnb-church.org](mailto:jenniee@acnb-church.org)

**Treasurer PCC** Mrs. Pamela Morffew Tel: 02380 411146

Email - [pamm@acnb-church.org](mailto:pamm@acnb-church.org)

***Cheques should be made payable to Ampfield PCC please***

**Gift Aid Secretary** Mrs A Jeffery, Tel: 02380 252865

Email: [adriennej@acnb-church.org](mailto:adriennej@acnb-church.org)

**Magazine Editor** Chris Kerr, Tel: 01794 367104

E-mail: [chrisk@acnb-church.org](mailto:chrisk@acnb-church.org)

**Advertising** Kate McCallum Tel: 07738467350

Email: [katem@acnb-church.org](mailto:katem@acnb-church.org)

**DEADLINE: The third Friday of each calendar month.**

Contributions to this magazine are always welcome, however it may be necessary to edit or shorten articles. Note that the views and opinions expressed in this publication are not necessarily those of the editor or the Parochial Church Council. Advertisements in this publication do not carry the endorsement of the editor or the Parochial Church Council.

# Contents

4. Letter from Vanessa
5. Weekly service pattern
6. Benefice News
14. Ron & Stella's Quiz Night
15. Village News
20. Charles Llewellyn - Hampshire's first black cricketer  
by Alan Edwards
22. Man (and woman's) best friend - or is it? Part 2  
by Liz Hallett
24. Covid Babies - catch up with them as they start school
26. Friends of Chapel Wood - by Graham Roads
28. The Nativity Experience at Eastleigh Baptist Church
29. Graveyard Working Party by Phil Budden  
Cartoon
30. Notice from TVBC about Pension Credit by Alan Dowden
31. Thought for the Month by Ron
32. Ampfield Art Class Gallery
33. Remembrance Day service details
34. Answers to Ron & Stella's Quiz Night
35. A Prayer for Peace
36. St. Mark's Church Rotas



Photo of the Northern Lights in Ampfield by Charlie Allen

## *Letter from Vanessa*

### *Dear Friends*

Today I am thinking about our Hindu sisters and brothers as they celebrate Diwali, the festival of light. It symbolises the victory of light over darkness, good over evil and knowledge over ignorance. Those who celebrate illuminate their homes, temples and workplaces with oil lamps, candles or lanterns, and decorate their floors with rangoli patterns. Food is shared, and communities and families get together to celebrate and exchange sweets. It is a wonderful celebration! One story associated with Diwali is that of the warrior King Rama, who rescues his wife Sita and they find their way home by following lanterns lit by the villagers. So, it is a story of being lost, and wandering in darkness, but finding the way by the kindness and light of others.

As the nights draw in, the symbolism of light becomes ever more significant to all of us. In the Christian Church, 1st November is All Saints Day (sometimes known as All Hallows Day) and we celebrate the saints and heroes of the faith who have gone before us. We did this at Forest Church last week with our own fabulous festival of light! We carved pumpkins, toasted marshmallows, and thought about the stars in the sky. We were reminded that Jesus is the light of the world. For all of us, life can sometimes be difficult, but faith and religion can help us to find community, to find those who can support us, and lead us to connect with God and the divine presence. Prayer enables us to be comforted by the fact that God never leaves us alone. So as the nights draw in, and you light the fire or some lamps, remember these words from Psalm 18: 'You, LORD, keep my lamp burning; my God turns my darkness into light.'

*Vanessa*



# Weekly service pattern

## Sunday Services

	All Saints	St Mark	St Denys	St John
1st Sunday	11:00 Messy Church	09:30 Tidy Church	09:30 BCP Matins or Communion	11:00 Communion or Morning Prayer
2nd Sunday	11:00 Communion	09:30 Communion	09:30 Informal Morning Prayer	
3rd Sunday	11:00 Communion	09:30 Communion or Morning prayer	09:30 BCP Matins or Communion	
4th Sunday	11:00 Communion	09:30 Communion		
5th Sunday	11:00 Communion	09:30 Communion		

## Midweek Services

When	Where	What
Tuesday, 10:30	St Mark, Ampfield	Small group Communion in St Mark's room, followed by coffee
Wednesday, 19:00	All Saints, North Baddesley	Communion in a peaceful candle lit space in the midst of your busy week



*Please see page 14 for details of Remembrance Services*

## Benefice News

### Friends for Lunch Wednesday November 20th

Sadly, the October meal had to be cancelled at the last moment as the water supply had been cut off. We were due an inspection by Environmental Health, so this will now take place in November. Please contact Pam on 02380 411146 to book a place for November's lunch.



### St. Mark's Stall at the Ampfield Market Sat Nov. 2nd

We are grateful to everyone for their generous donations. In October we raised £78.70. We will be at the market in November and in the run up to Christmas will be selling **Christmas decorations and gifts**. If you have anything to offer please contact Chris (see p.2 for contact no.).

### Fun Wine Tasting Evening - Friday 25th October

The Friends of St Mark's held their second wine tasting event on Friday 25th October in St Mark's Room at the church. We tasted 6 wines, 3 white and 3 red from around the world lead by Stephen who took us through how to distinguish wine through its colour, it's smell, it's taste and it's aftertaste. We learnt that the main sensory organ for wine tasting is the nose!

We had olives, bread, cheese and nibbles. There was also a multiple choice wine quiz and some teams chose some very interesting and amusing answers. Everyone had a great time and the evening was rounded off with a raffle which included a bottle of each of the wines we tasted as well as other prizes. Our next planned event will be **'Wine and Words; Bards and Beer'** a poetry evening with readings so look out for the date in late January/ early February.





# Benefice News

## Forest Church Sun 27th October 3pm

There have been four Forest Church Services this year which have been held on a Sunday afternoon outside St. Mark, Ampfield. The area around the church is so beautiful and fortunately the weather has been very kind for each one of them! It has been so much fun joining together outdoors to worship God. The absolute joy for all of us is the fact that it is bringing people together from the benefice and beyond. We are welcoming people of all ages, each taking part in the activities and connecting to God in a new and different way.



In September we focused on apples and on 27th October (the day the clocks went back) we celebrated light and of course managed a bit of pumpkin carving as well as toasting marshmallows. The children especially enjoy having fun outdoors whilst the adults can sit and enjoy a cup of tea! There will be a break during the Winter months but when the weather begins to get a little warmer and the evenings lighter, we will be able to join again for outdoor worship.

## Sunshine Saints Wednesdays at St. Mark's

Sunshine Saints is back. Join us on \*Wednesday mornings, 10:30 - 12, in St Mark's room for play, chat and refreshments. Each week there will be a special craft for your children to enjoy and take home afterwards. All children are very welcome to bring their parents, carers or grandparents. We would love to see you.

**Beth**

\*(Not the 3rd. Wednesday)



# Autumn Coffee Morning

Raffle, Christmas decorations and  
stocking gifts, jewellery, and Christmas  
craft activity for children!



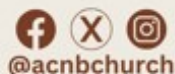
**St Mark's Church Room**

**10am - 12noon  
23rd November**

**Entry £3 to include coffee and cake**



[WWW.ACNB-CHURCH.ORG](http://WWW.ACNB-CHURCH.ORG)







# **CHRISTMAS**

## **Craft Market**

**Saturday 30th November**  
**10am - 2pm**

**All Saints Church, Rownhams Road**  
**North Baddesley**  
**SO52 9ER**

**Handmade Crafts, Refreshments**  
**Cake Stall**



# Benefice News

## Pilgrims - Saturday 8th November 10am

"To be a Pilgrim..." the famous line from the hymn "He Who Would Valiant Be." I can remember singing this at primary school, and even at that young age I enjoyed the tune, and the words meant something, and now with many more years of life's experiences, the words have an even deeper meaning.



I am reminded of this because in October a small group of us came together, for the first time, to discuss what it means to us to be a Christian; the name of this group is "Pilgrims."

The aim of the session is to provide an opportunity to explore the bible, our thoughts and beliefs, our puzzles and doubts, our insights and visions, all in a safe space, with like-minded individuals. The intention is that this is on-going gathering, which will meet monthly, to help us enhance and grow in our faith. The first 6 sessions are following the "Pilgrim" course, and in October we started by considering the question "Do you turn to Christ?" The accompanying workbook gave bible readings, suggestions for conversations, reflections and prayers, which really helped to broaden understanding and awareness. Vanessa led us and was able to create an atmosphere, which was safe and where everyone had equal voice.



I was excited about this new development, as I have long wished for just such a group, and I wasn't disappointed. If I again consider the words of that old hymn, this time through the prism of the Pilgrims group, they have greater meaning, and I am looking forward to expanding and growing even more. Oh, and I forgot to say... we had the most delicious cake made by Jemma; thank you Jemma; cake will now be an integral part of the session! Why not come and join us on the second Saturday of each month from 10.00 - 11.30 am, in St Mark's Room.

**Jo Hooper**

## Benefice News

# All Souls Service

**Remembering our departed loved ones**  
**Sunday 3rd November at 3.30pm**  
**All Saints Church, North Baddesley**



**There will be an opportunity to light a candle in their memory.  
The service is open to everyone who might find it comforting.**

**Refreshments will be served after the service**



Local families affected by dementia are being invited to take part in an award-winning programme, to help train the healthcare professionals of tomorrow and improve dementia care. The Time for Dementia programme, supported by Alzheimer's Society, pairs families affected by dementia with undergraduate students, helping to better educate them about life with dementia and the challenges that come with it. This autumn a new cohort of University of Southampton Medical School students will be taking part and Alzheimer's Society are now seeking families in the area who would like the opportunity to make a difference to training health professionals. Time for Dementia is a fantastic way for the next generation of healthcare professionals to gain first-hand knowledge of what it's like living with dementia. If you would like to know more about the programme, or you know someone with dementia and a family carer who would like to take part, please get in touch with us at [timefordementia@alzheimers.org.uk](mailto:timefordementia@alzheimers.org.uk) or call 07483 926202



## Benefice News

### All Souls Service at All Saints Sunday 3rd November 3.30pm



Our annual Service is a time of quiet reflection to remember our loved ones who have died. It gives an opportunity to pause and remember them with love and affection. Prayers will be said and candles lit, as we sit together and find comfort in the presence of God and each other. The service (otherwise known as Commemoration of the Faithful Departed) will take place at 3.30 pm at All Saints Church, North Baddesley. After the service there will be an opportunity to sit and reflect or join us for refreshments.

### Digital Hub - All Saints: Wednesdays 10.30am - 12 noon

If you know anyone who would like some extra help when using their laptops, tablets or phones then please pass on details about digital hub. This is a group that has been set up to support those who are finding difficulty with such technology. They meet every Wednesday from 10.30 - 12 noon in All Saints.

### Social Hub - Wednesdays at All Saints 10am - 12 noon

During the morning there will be an opportunity to have a go at some crafts, do jigsaws or just relax with a book that has been borrowed from the Community Library (also open on a Wednesday morning) or just sit and chat. There are free drinks and biscuits and sometimes other treats!

### Welcome Café at All Saints Thursdays at 10am



The café is for any and everyone in the community to come and meet friends for a catch-up and enjoy great coffee. There is no charge for coffee but donations are welcome. We particularly welcome those who find themselves lonely or who have been bereaved. There are trained 'listeners' who will be happy to sit with you and if appropriate signpost to other helpful organisations, all in complete confidence

### Sunshine Saints Fri: 10:00am at All Saints (term-time only)

Sunshine Saints is the toddler and baby group which meets every Friday in term time from 10:00am to 11:30am in All Saints Church. It is an opportunity for the children to have fun playing together. There are snacks for the children and tea and coffee for those who accompany them, suggested donation: £2.



## Benefice News

Join us for our Advent Reflection group, in four parts, where we will be delving into the lives of biblical characters from the book, 'Women of the Nativity', by Paula Gooder. Set within the culture and context into which Jesus was born, the stories give voice to those whose stories are often spoken over louder voices. Perhaps we can imagine our own stories finding their place too. Contact Ann or Cilla for further details.



# ADVENT REFLECTIONS

*Women of the Nativity*

***The Details:***

30 November 10-1pm St Denys  
4 December 2-3.30pm All Saints  
11 December 2.3.30pm All Saints  
18 December 2.3.30pm All Saints

◆

***For further info contact:***

Ann or Cilla  
[annd@acnb-church.org](mailto:annd@acnb-church.org)

All stand alone sessions with coffee and cake. Hope you can join us!

---

## **Ron & Stella's Quiz Night**

1. Which freezes faster. Hot or Cold Water?
2. Which country is the largest in the world?
3. M & M's fruit chews would eventually become what popular sweets?
4. What was the first animal to ever be cloned?
5. Nearly all fossils are preserved in what type of rock?
6. What is Prince Harry's official first name?
7. How many points does the Star of David have?
8. Michael Flatley danced his way to fame in what Irish-inspired show?
9. 'There's a snake in my boot' is famously spoken by Woody, a cowboy doll. In which 1995 animated movie?
10. What Country uses approximately Four Billion miles of toilet paper each year?



**Ron Cobb**

Answers on p. 34



# Village News

Dates to save -

## Friday 22nd November.

The Village Hall Fun Quiz Night returns! 7pm for a 7.30pm start. Teams of 6, Bar, Raffle and all the usual fun and excitement returns to brighten the Autumn months. Tickets £5 per person. Teams are welcome to bring along a picnic supper. Nibbles will be provided. Book early to avoid disappointment !

## Wednesday 11th December.

The annual pantomime - A Christmas Carol. Doors open at 5.30pm for a 6pm start. Tickets £5 children / £10 adults. Squash and biscuits provided. See p. 17. Book early to avoid disappointment.



**Julie Trotter, Hall Secretary**

“If we forget what makes us human, we may one day endanger the future of humanity”

*The late Chief Rabbi, Jonathan Sacks warning about the effects of Artificial Intelligence.*

*This was taken from an article on AI in The Times (26th October 2024) by Anthony Sheldon.  
Recommended reading.*

**The  
Ampfield Market**  
(Established in 2000, now in its 25<sup>th</sup> year !)

**will take place  
on**

**Saturday November 2<sup>nd</sup>  
From 10am to 12noon  
in Ampfield Village Hall  
(SO51 9BJ)**

Our Market has a great reputation, we regularly sell fresh fruit and veg supplied by Hansards in Awbridge and delicious bread and cakes supplied by Matts Bakery.

Honey, preserves, plants and fresh flowers. Cards, wrapping paper and books. Collectables, unusual crafts and jewellery. Clothes, toys and puzzles. Bric a brac, seasonal treats and much, much more !

**We serve fresh coffee and a wonderful selection of  
cakes throughout the morning.**

**Come along with friends and family to enjoy this  
Special monthly community event.**

**Parking and admission are always FREE.**

All proceeds support the Village Hall. Registered charity no. 1057353  
Contact Julie on 023 80254587 or [Julie@ampfield.org.uk](mailto:Julie@ampfield.org.uk)  
for table bookings etc.

**Next date. Saturday December 7<sup>th</sup> 2024**

## WHAT'S ON IN THE AMPFIELD VILLAGE HALL in OCTOBER 2024- JOIN IN ONE!

### MONDAYS

**PILATES WITH HANNAH** – Two sessions in the morning. Starting at 9.15 & 10.20am. Mixed ability mat class. Details at [www.pilateswithaplomb.com](http://www.pilateswithaplomb.com)

**AMPFIELD PARISH COUNCIL** Ordinary, planning and other meetings on a Monday evening. Details at [www.Ampfield.org.uk](http://www.Ampfield.org.uk)

### TUESDAYS

**AMPFIELD BRIDGE CLUB** is a very popular club playing friendly duplicate bridge. It meets every Tuesday evening (except at Xmas time) from 7pm to 10pm. If you require a partner or want more information contact Janet Cox on 07879 915726 or email [janetwallace1@hotmail.co.uk](mailto:janetwallace1@hotmail.co.uk) New members always welcome.

### WEDNESDAYS

**TODDLER SENSE SALISBURY** – two morning sessions. 13 months to 4 years.

Call Sian on 07984 051713 or Email: [salisbury@toddlersense.co.uk](mailto:salisbury@toddlersense.co.uk)

**1<sup>st</sup> AMPFIELD BROWNIES** meet every Wed. evening during term time. 6pm to 7.30pm Tel. Sue Moore 01794 523947

**ROMSEY MODELLERS** Build model kits? Want to get more from your hobby? Join this club on the 1<sup>st</sup> and 3<sup>rd</sup>. Wed. of each month 8pm to 10pm..

[www.romseymodellers.co.uk](http://www.romseymodellers.co.uk)

### THURSDAYS

**YOGA MORNING with Diana Craven** . We are pleased to welcome back Diana to her regular class. 9.30-10.30 am. Please note her new email address for further details [cravendiana18@gmail.com](mailto:cravendiana18@gmail.com)

**AMPFIELD ART GROUP** meets Thurs. afternoons during term time 2pm to 4pm. Very friendly atmosphere. Beginners and those wishing to develop their skills welcome. Contact email: [Julie@ampfield.org.uk](mailto:Julie@ampfield.org.uk)

**NEW! PILATES WITH HANNAH PLOMB NOW HAS TWO THURSDAY EVENING CLASSES.** The Regular Class starts at 6.15 and a special beginner's class at 7.20pm. For details: [www.pilateswithaplomb.com](http://www.pilateswithaplomb.com)

### FRIDAYS

**YOGA ON FRIDAY MORNINGS with YogaByGaynor** 9.30 to 10.30am All levels, Gentle, Vinyasa Flow Yoga. All welcome. Facebook: @yogaByGaynor OR Email: [yogabygaynor@yahoo.com](mailto:yogabygaynor@yahoo.com)

### SATURDAYS

**VILLAGE MARKET (Established 2000)** 1<sup>st</sup>. Saturday of every month 10-12noon (except Jan. and Aug.). See poster for details. Interested in renting a table?

Ring Julie on 02380 254587 or email [Julie@ampfield.org.uk](mailto:Julie@ampfield.org.uk).

**CARD MAKING WORKSHOP WITH VANESSA.** A range of crafts taught, meets monthly, normally on the second Saturday of each month from 10am to 4pm.

Details from Vanessa 01794 515490 or email [Ampfieldcards@gmail.com](mailto:Ampfieldcards@gmail.com)

*For general enquiries and hall bookings tel. Martin Hatley 07970 501050 Or visit our new website: [www.ampfieldvillagehall.org.uk](http://www.ampfieldvillagehall.org.uk) Or E mail: [in-](mailto:info@ampfieldvillagehall.org.uk)*

*[fo@ampfieldvillagehall.org.uk](mailto:fo@ampfieldvillagehall.org.uk)*

**NEW DIARY DATES:** ***FUN QUIZ NIGHT returns on FRIDAY 22 NOVEMBER '24***  
***Wednesday December 11<sup>th</sup> is Panto Time again – O yes it is ! The***  
***ever-popular Bumblefly and Forest Forge Theatre companies return with their***  
***fun version of 'A Christmas Carol'.***

# Ampfield Village Hall

## ?? QUIZ NIGHT ??

Come & join us at the friendly  
Fun Ampfield Village Hall Quiz Night with Raffle!

By demand, the Ampfield Quizmasters are back!

**Friday 22 Nov. 2024 at 7.30pm**  
(Doors open at 7pm)

Come as a team of up to 6, or in smaller numbers  
and teams will be made up on the night.

A bar will be available and 'bar snacks' will be put on your  
tables. If you wish, please bring along your own picnic supper  
to enjoy during the interval or throughout the evening

**Cost £5 per person inc. 'bar' snacks**

**BAR                      Prizes for winning table.                      RAFFLE**

Pay on the evening but please book your place or a table first.

**Contact: Martin Hatley 07970 501050**  
**Or email: [info@ampfieldvillagehall.org.uk](mailto:info@ampfieldvillagehall.org.uk)**

All proceeds to go to the Village Hall Funds – a registered charity  
No. 1057353

**BOOK YOUR TABLE NOW**

## COMING TO AMPFIELD SOON!

***Bumblefly Theatre Company*** and Friends return to  
Ampfield Village Hall on Wed. 11<sup>th</sup> December 2024  
In  
**'A Merry/Humbug Christmas Carol'**

(A light hearted pantomime for the whole family)

Starting at 6 pm prompt (doors open at 5.30pm)  
Tickets remain at same price! (unreserved) Adult £10 Children £5  
(Inc. *Squash or coffee and HobNobs!*)

Available from Martin Hatley Tel. 07970 501050  
E-mail: [info@ampfieldvillagehall.org.uk](mailto:info@ampfieldvillagehall.org.uk)



***Please book early.***

# BLACK HISTORY MONTH

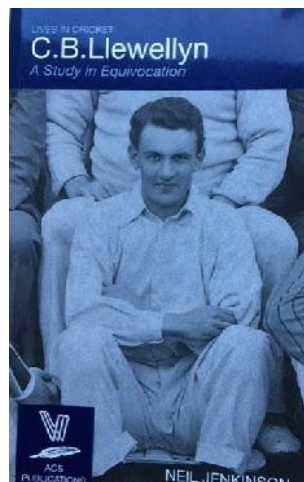
## CHARLES LLEWELLYN HAMPSHIRE'S FIRST BLACK CRICKETER

By Alan Edwards

As a contribution to Black History Month, I thought readers of The Messenger would be interested in Hampshire's first black overseas cricketer. It is a rather interesting and unique story, part of which has never been fully explained. I'll keep statistics to a minimum, but concentrate on his background, how he came to play for South Africa when black people were banned due to the imperialist policies of Cecil Rhodes, and his cricketing life in England.

Charles Bennett Llewellyn - known as "Lew" to his family and "Buck" to the cricketing fraternity - was born in Pietermaritzburg, Natal, to a Welsh father and a mother who hailed from St. Helena, on 29 September 1876. For virtually all of his life, the colour of his skin was rarely a conversation piece. Indeed, his daughter, when interviewed upon his death, averred that he came from "white stock." Most of his fellow players thought of him as "well-tanned." However, on researching his background, historians realised that many occupants of that tiny speck in the Atlantic Ocean had been, or were descended, from African slaves, and that his family were of mixed race. All the indications are that "Buck" was aware of his ancestry and others only became aware of it when he encountered racism. He would then invariably withdraw from the conversation. In many ways, it must have been a lonely life.

After a startling entry to first-class cricket in 1894/95 when his talent as a slow left-arm bowler, a hard-hitting left-handed batsman and superlative fielder was obvious, he was recommended to Hampshire by Brigadier-General Robert Montagu Poore. There are echoes in this stage of his life with Basil D'Oliveira, who was recommended to come to the country to escape the South African Apartheid regime nearly 70 years later by another great man of Hampshire, the broadcaster John Arlott. Buck had already played test cricket for South Africa, only the second black man from any country to do so; he therefore had to serve a two-year residential qualification, which he spent, initially, on TS Mercury on the River Hamble.



Cont. ...



...Cont.

He hit the ground running. On his first appearance for Hampshire in 1899, whilst still qualifying to play against other Counties, he took eight wickets in an innings against the Australians. In his first full season in 1901, he attracted the attention of WG Grace and played for his London County side. In 1902, he was on the shortlist of 14 for the England side in the first test at Edgbaston. Cricket scholars regard the eleven that eventually took the field as one of the best-ever England sides. Exaggeration? Let's just say that they bowled out the Aussies for 36, and leave it at that.

He continued to play for Hampshire until 1910 when he left the County to earn more money in the northern leagues to support his wife and four daughters. He continued to earn a contract there until he was 58 years old in 1935. His end was sad in the extreme. He was active until the age of 83. He then suffered a cycling injury near his home in Chertsey and was crippled for the rest of his life. There was then a gas explosion at his house. Both he and his wife were injured, but places could not be found for them in the same hospital. They were never reunited.

And so how did he slip through the net all those years ago in South Africa? **Nobody else ever did so.** There was a black fast bowler, Krom Hendricks, who at the turn of the 20<sup>th</sup> century was reputedly the quickest in the world. Perhaps part of the answer lies in the title of Hendricks' biography (pub. 2021): *Too Black To Wear Whites*. Hendricks also played in that part of the country where Rhodes' word was sacrosanct. Llewellyn was of lighter skin, though undeniably non-white. The cricket authorities in Natal were more cricket mad, and his exclusion would have created a furore. Also, as he spent so much time in England as his career progressed, by some mental contortion the South Africans argued he was English, although his was the first name on the team sheet whenever he could play. The hypocrisy was breathtaking.

The main reason why he became of such interest some twenty years after he died, was South Africa's re-entry to test cricket and the selection of Omar Henry in 1987. Some claimed he was the first South African black test cricketer. Inevitably, mention was made of Charles Llewellyn, and thus spawned a mini academic industry. Perhaps the final word should rest with Neil Jenkinson, Llewellyn's biographer. He wrote: "Buck", pursuing his quiet way through nearly forty years in English cricket in a state of denial, avoided involvement in racial debate, at what cost to himself we do not know.

**Alan Edwards**



# Man's (and woman's) best friend - or is it?

## Part Two

by Liz Hallett

So far we have considered these images of dogs as being aspects of everyday life at the time they were carved, and this may be the correct interpretation. However, the medieval mind was obsessed with symbolism and people thought that man was the highest of the animals and the rest of creation was there to instruct and to improve their understanding of the world. Each animal and bird was thought to represent some aspect of life. Dogs - not surprisingly, represented undying faithfulness (Fido translates as 'the faithful one'), but they represented other things too.



*St. Mary Redcliffe  
Dog with bone*

They also symbolised those who return again to their sins after they have confessed. A dog chewing on a bone can represent envy which is said to gnaw at the soul as a dog gnaws at a bone. Here are a couple of dogs whose bones are open to interpretation: on the left the dog sits at the foot of his master's effigy in St Mary Redcliffe, Bristol, and may just have been given a bone to keep him happy through eternity, but beside him a ravenous, skinny dog at Christchurch Priory could well be representing envy.



*Is the Wormleighton dog a  
warning against lechery?*

our spiritual wounds by confessing our sins.

Dogs shown hunting rabbits and foxes, as in part one, may be representing Good in pursuit of Evil. On the other

hand, a stag hunted and surrounded by dogs may represent Christ surrounded by the forces of evil - a rather different interpretation. It can all

be a bit confusing. The over-excited dog at

Wormleighton may be a warning against lechery and prostitution. On the other hand dogs are sometimes shown licking themselves, like the one at Lakenheath, as they were known to heal wounds by licking them. We can heal



*At Lakenheath the dog  
heals its wounds by  
licking them*

Cont. ...

...Cont.

Let's end by looking at the dog as a representation of faithfulness and devotion. Many examples of the effigies in churches show husbands in armour, their feet resting on a lion, and often the wives have small dogs either under their feet or snuggled against their skirts. Dogs are also sometimes found at the feet of monastics and clerics, for whom a lion was not felt to be appropriate. Some of these animals are charming and the Trotton image, alert but loving, is one of my favourites.



*This brass dog is nestling in his mistress's gown at Trotton, near Petersfield*



*At Morton Corbet the dog is pulling on his mistress's dress, begging to go for a walk.*



*Margaret Clarrell's two little dogs at Harewood*



**Liz Hallett**

# COVID BABIES

In January 2020 we published photos of local babies born during Covid. Now starting school, we update you on their progress.



2020:  
Winona was born in July and is the granddaughter of Marilyn and Paul. This was Marilyn's first cuddle in August after they had all isolated for 2 weeks. They had not seen Winona since October.



2024:  
"Here is our 'Covid' granddaughter Winona ready for her first day, well 2 hours, at school. Mum found it emotional but Winona apparently loved it and purple is her favourite colour."



2020:  
Valentina Belle, daughter of first time Mum Jasmine and Dad David was born in September in Winchester Hospital. She is also the first grandchild of our recently appointed Church Warden, Mark Braund.



2024:  
"On the left is our granddaughter Valentina Belle (Vallie for short). She is seen here entering pre-school. She has

just turned 4-years old. She was Christened at St. Mark's, Ampfield, just over 3-years ago."



...Cont.

2020:

Frederick Bodhi Birmingham was born on 30 March at Kingston hospital, a brother for Oscar and Coco. He is Annie & Oddie's grandson.



2024:

"Freddie loved his first day at his new school in his new home in north Devon, joining his 2 siblings at the same school. Having been born in Richmond, London during covid, the family relocated to Devon 3 years ago. He loves the beach life, his new chickens and his country life."



2020:

And last but not least, Chris and Rob's granddaughter Lottie Alice Amelia, born in April 2020.

2024:

"Lottie lives in Farnham and loves 'big school'. She is learning to ride a 2 wheel bike (without stabilisers!) and is very proud of herself."



# Friends of Chapel Wood by Graham Roads

Waking up on Saturday, 12 October, it was great to find the weather dry and the prospects, for the morning at least, reasonable. We are approaching a critical few months in the woodland. We have a lot of planting that needs to be completed by next spring and there is precious little time to lose.



We had three important jobs for this working party. The first was our regular inspection of the woodland footpath network. It is very easy for the paths to get overgrown during the summer months, making life difficult for everyone. Our monthly walk around helps keep this under control. It allows us to undertake safety inspections, whilst also ensuring the paths remain clear of litter.

Meanwhile, the bracken has been enjoying almost perfect growing conditions. The area around the fire pit becomes transformed into a bracken jungle, to the extent that the pit and its surrounding seats are barely visible. Arming ourselves with scythes, slashers and other assorted anti-bracken devices, we began the fightback. We surrounded the offending vegetation, working inwards until the seats and the pit were reclaimed. This may sound an easy task but, in practise it offers a jolly good workout.

Cont. ...



...Cont.

Finally, we turned our attention to the slope at the rear of St. Mark's. we are hoping to start planting here next month but first it needed to be cleared. Over the summer, the brambles had taken off, clumps of grass were everywhere, and a host of other plants were growing away merrily, quite undisturbed. Using our (very) limited plant identification skills, we discovered foxgloves, deadnettle, St John's Wort and some wild violets. These were carefully preserved, but everything else must go. Another good workout, suggesting double rations of cake at coffee.



The Friends of Chapel Wood is a group of keen volunteers who look after Chapel Wood, which surrounds St. Mark's church. New recruits are always welcomed. If you fancy the idea of joining some like-minded neighbours for a few hours once a month, just turn up in the St. Mark's car park at 09:45 on



the second Saturday of every month. Cakes are normally provided, simply bring your own tea or coffee.



**Graham Roads**



The traditional and popular Nativity Labyrinth will be running again at Eastleigh Baptist Church this month. The Labyrinth offers a walk-through experience of the Christmas story, starting in a 21st century living room, before being transported back to biblical times.



This has become a Christmas tradition for many Eastleigh residents, who come back year after year to see how the body of the church has been transformed. Inspired by the ancient tradition of a labyrinth that takes a person on a spiritual journey, visitors walk through three scenes from the nativity story and finish their journey in the nativity stable. On the way they meet characters from the biblical story. The design and attention to detail is amazing; it has to be seen to be believed



The labyrinth will be open to the public on Saturday 16th November from 11:00 am to 4:00 pm, coinciding with the town centre Christmas Light switch on activities. No booking is necessary, and entry is free. Visitors will receive a small gift (while stocks last), and craft activities for children will be provided in the church hall. The Wells Place

Coffee Shop will be open offering a selection of drinks and snacks.

**Chris, Youth and Children's Minister, Eastleigh Baptist Church**

## Graveyard Working Party by Phil Budden

On a pleasant dry Sunday afternoon in mid-October, an enthusiastic team worked to cut down the rhododendrons along the northern edge of graveyard. This is needed periodically along the boundary with Chapel Wood as the rhododendrons encroach and start to obscure the graves along the edge.



Of course we had to stop for a break with plenty of cake - Harry Potter cake as pocketed by Hagrid in the first film

in 2001. The vicar and Bertie worked well as a team, pulling branches to the

bonfire pit. Bertie pulled hard but was easily distracted, so they didn't always stay on course!

**Phil**

\*\*\*\*\*



"I hate changing to Daylight Saving Time."

From Facebook



## Could you or a loved one be entitled to Pension Credit?

Pension Credit is a means-tested benefit designed to top up the income of people over State Pension age, if your weekly income is below:

- £218.15 if you are single
- £332.95 if you have a partner

Even if your income is higher, you might still be entitled to claim it if you have a disability or care for someone.

The average Pension Credit award is worth £3,900 per year and unlocks a host of other benefits such as: winter fuel payments, free TV licence (if over 75 years old) and support with rent/mortgage interest and council tax.

For more information and to apply for Pension Credit: [www.gov.uk/pension-credit](http://www.gov.uk/pension-credit) or call 0800 99 1234.

Test Valley councillors have come together to support some of the most vulnerable pensioners in the borough who are set to lose their Winter Fuel Allowance following the government's recent decision to limit payments to those receiving means tested benefits.

Councillors showed unanimous support for the proposal to allocate £20,000 to the Test Valley Winter Fuel Payment Scheme, and a further £20,000 if required, to continue support for those of pensionable age in the borough who need assistance with paying their winter bills.

*Alan G Dowden*



"What did the hat say to the scarf?"

"You go around & I'll go ahead!"

"What's the difference between a hippo & a zippo?"

"One is very heavy, whilst the other is a little lighter"

"I removed the shell from my racing snail in the hope it would go faster, but if anything it made it more sluggish"

## THOUGHT FOR THE MONTH

I love trains. Maybe that should be I love underlining new train numbers. Essentially, that makes me a trainspotter. Today, trainspotter is generally described as being a train enthusiast. Maybe that sounds more modern than a trainspotter. Trainspotter conjures up an image of young boys, in short trousers running up and down station platforms, with pencil and paper n hand. I was like that between 1955 and 1959, in the halcyon days of steam trains.



Nowadays, since 1983, without the short trousers, I move up and down station platforms, without running, jotting down numbers of today's electric and diesel trains. On any large station today there are often many, generally retired guys, with their cameras, dictaphones and, yes pencils and paper. Maybe that should be pens and notebooks.

Today's enthusiasts are, almost without exception, only interested in freight trains and their many thousands of wagons. Indeed, a whole new generation, mainly older guys, actually take the numbers of the wagons. Can you image that. In fairness, there are some younger people, amongst these wagon spotters. Wagon spotting is definitely not for me. It would make me cross-eyed, trying to capture all those very long, numbers as the trains pass by at some speed. I am an old-fashioned trainspotter, pure and simple, and proud to call myself that. We all should be proud of what we really enjoy and be prepared to shout about it.

**Ron**

# Ampfield Art Class Gallery

Julie Trotter's Art Class takes place on  
Thursday afternoons  
from 2-4pm at the Village Hall



Chinese Birch - Alison,  
pen and watercolour.



A thoughtful moment - David,  
pencils.



Northbrook, Kirtlington,  
Oxfordshire -  
Nick, watercolour.





## *Sunday 10th November - Remembrance*

On Sunday 10 November there will be an Act of Remembrance at each of the three War Memorials in the Benefice, as we remember those who gave their lives in the two world wars and all who have died in combat since.

### **Ampfield War Memorial**

(On corner of A3090 and Knapp Lane)

There will be a short Act of Remembrance beginning at approximately 10:50 am at the War Memorial. Assemble at the Ampfield War Memorial by 10.45. There will be a service as usual at 9:30 in St. Mark's, Ampfield, before the Act of Remembrance.

### **Chilworth War Memorial**

(On A27, opposite the Chilworth Arms)

There will be a short Act of Remembrance beginning at approximately 10:50 am at the War Memorial. Assemble at the Chilworth War Memorial by 10.45. There will be a service as usual at 9:30 in St. Denys', Chilworth, before the Act of Remembrance.

### **North Baddesley War Memorial**

(St. John the Baptist, North Baddesley)

There will be a parade of uniformed organisations and local dignitaries, plus anyone else who would like to join. It will leave All Saints Church, Rownhams Road at 10.20 am and the service around the War Memorial at the church will start at approximately 10.50 am.

*All are welcome to refreshments afterwards at All Saints, Rownhams Road, North Baddesley*

## Answers to Ron & Stella's Quiz Night

1. Hot Water
2. Russia
3. Starburst
4. A Sheep (Dolly)
5. Sedimentary
6. Henry
7. 6
8. Riverdance
9. Toy Story
10. China



*From the St. Mark's  
Register*



*Please hold our Benefice I your prayers*

*In a month when we remember the destruction of wars past and present we pray for peace.*

## A Prayer for Peace

Almighty God,  
from whom all thoughts of truth and peace proceed:  
kindle, we pray, in the hearts of all, the true love of peace  
and guide with your pure and peaceable wisdom  
those who take counsel for the nations of the earth  
that in tranquillity your kingdom may go forward,  
till the earth is filled with the knowledge of your love;  
through Jesus Christ your Son our Lord,  
who is alive and reigns with you,  
in the unity of the Holy Spirit,  
one God, now and for ever.  
Amen.



From the website of the Church of England

## Rotas for St. Mark's in November

Date	*	Sides	Reader 1	Reader 2	Intercessions	Coffee	Music
3 Nov 9.30	Café Church					Doreen	Mark & Abbie
10 Nov 9.30	Holy C	Jennie Sally C	Heather S Wisdom 3:1-9	Jennie Romans 8:18-25	Jean	Chris	Clive
17 Nov 9.30	Holy C	Heather C Robyn	Chris Kerr Daniel 12:1-3	Heather C Hebrews 10:11-14 (15-18) 19-15	Rob	Jennie	Clive
24 Nov 9.30	Holy C	Ron Stephen	Jean Daniel 7:9-10, 13, 14	Robyn Revelations 1:4b-8	Sally	Karen	Jean

*Please make sure you find someone to take your place if you are unable to do your turn, and annotate the rotas displayed in the vestry and the porch.*

*Thanks for all your help.*

**Jean Smith**

**Flowers: Diane  
Greenery during Advent**



## **CONTRIBUTIONS and CONTENT**

**DONATIONS** may be payable by cheque, please post to:

Attn. Adrienne, All Saints Church, Church Close, North Baddesley  
SO52 9EQ made out to **Ampfield PCC** and on the reverse please  
specify: 'THE MESSENGER MAGAZINE'.

Or paid directly:

Sort code: 30-92-94 Account No: 01254722

Account Name: St Marks Church PCC / Reference: Magazine

### **ADVERTISING**

Please send to: **Kate McCallum** at [Kathleen.mccallum@icloud.com](mailto:Kathleen.mccallum@icloud.com)

Application for designs and rates for both commercial and charity advertisements will be agreed before submitting copy/drafts for inclusion as JPEGs in high resolution not PDFs or for any graphic design work that you may require to be published. The quality, copyright and content are the sole and legal responsibility of the advertiser.

The views expressed by contributors are not necessarily those of Editors or PCCs nor will they accept any liability for such. They are not responsible for any of the views, statements or opinions expressed in the contributions and any reliance placed on them by the reader is at the readers sole risk.

Copyright is the legal responsibility of the contributor and not that of the editors or PCC with regard to any content. Advertisements are not endorsed or guaranteed on any product or services referred to in, or the content of, such contributions. Every care is taken on content, but possibly there could be cause for misunderstanding that was not intended.

## **AMPFIELD PARISH COUNCIL**

**Kate Orange - Clerk to Council**

2 The Square

Braishfield Road, Braishfield

Romsey SO51 0PQ

**Tel: 07922 118840**

**email: [clerk@ampfield.org.uk](mailto:clerk@ampfield.org.uk)**

**[www.ampfield.org.uk](http://www.ampfield.org.uk)**



# Simplify your life with our top-rated service

UW is the only home services provider to bundle everything onto one, simple, monthly bill. That includes gas, electricity, broadband, landline, mobile and insurance.

**And because we're Which? Utilities Brand of the Year 2020, you know you'll be in good hands.**



My name is Natalie and I help people save money on their boring old bills - for FREE. You may not have heard of Utility Warehouse before - but we've actually been around for over 24 years! We are a multi award winning British company with award winning customer service and a UK call centre.

**Find out more...Natalie Day**  
**natalie@dropintheocean.co.uk 07887602483**

Here for all of your grave care needs



## *The Graveside Sisters*

Head stone cleaning, Letter re-painting  
Weeding, Tidying and General care.

Tel 07810111592 or 07810810476

Email... Emma@thegravesidesisters.com

Visit.. Wwww.thegravesidesisters.com

Facebook.. Wwww.facebook.com/TheGraveSideSisters

# **NIGEL GUILDER** Ltd

**FAMILY OWNED FUNERAL DIRECTORS**

Nathan House, 27 Hursley Road, Chandler's Ford, SO53 2FS



**Nigel Guilder Dip FDMBIFD**

**Lucy Guilder Dip FD MBIFD**

**John Firth Dip FD MBFID**

24 HOUR PERSONAL SERVICE

**02380 262 555**

**[www.nigelguilder.co.uk](http://www.nigelguilder.co.uk)**

Pre-paid Funeral Plans Available



**Blackwell & Moody Ltd.**

Monumental Masons and  
Restoration Specialists

**Jeffrey Higgins**

Magdalen Masonry Works,  
Alresford Road, Winchester,  
Hampshire. SO21 1HE

Tel: 01962 852 476

Fax: 01962 850 865

Email: [blackwellandmoody@gmail.com](mailto:blackwellandmoody@gmail.com)

**Over 100 years  
of service  
to the local  
community**



**The Family  
Owned Funeral  
Directors**

The Peace  
family have  
proudly served  
Romsey and  
the surrounding  
area for three  
generations.



**Experienced and Flexible**

Honesty, integrity and transparency are at  
the heart of our beliefs.

We understand every funeral is unique.

**Modern Professional Facilities**

Our premises have complete facilities on site  
and our dedicated team are available  
to support you 24 hours a day.

**[www.ahcheater.co.uk](http://www.ahcheater.co.uk)**

**ROMSEY**  
01794 513393

**NORTH BADDESLEY**  
02382 358860

**AVAILABLE 24 HOURS**

Computer Problems?	
	PC, Mac, iPads, Screens Windows XP 10 & add Menus Virus Fixes & Tune up Data recovery, Printing Broadband & Networking
Independent Impartial Advice Home Visits	
Laptops, Macs & Phones	PC's, viruses, Home setups
Call <b>Colin:</b> <b>01962 713890</b> <b>07727 481220</b>	Call <b>Gerry:</b> <b>01962 712674</b> <b>07900 845814</b>
10% off labour with Parish Magazine over	

<p><b>AMPFIELD to ROMSEY</b> <b>DIAL A RIDE</b></p> <p>A transport service for disabled or elderly people who cannot use ordinary buses. We provide a door to door service using specially adapted vehicles, for shopping trips and other individual transport needs.</p> <p><b>Tel: 01264 356808</b> <b>www.tvcs.org.uk</b></p>
------------------------------------------------------------------------------------------------------------------------------------------------------------------------------------------------------------------------------------------------------------------------------------------------------------------------------------------

* * * * *		* * * * *
* * * * *	<b>Good Roots Garden Services</b>	* * * * *
* * * * *	I have 20 years experience in horticulture and specialise in garden maintenance, small landscaping & repair works' I can either work with you to improve your outside space or offer a 'spruce up' service. Please get in touch so I can come and chat with you about what your garden needs with a free, no-obligation visit.	* * * * *
* * * * *	07749 299227	* * * * *
* * * * *	Tel. Pete Hale on :07749299227 or email <a href="mailto:pete@goodrootsgardening.co.uk">pete@goodrootsgardening.co.uk</a>	* * * * *
* * * * *		* * * * *
* * * * *		* * * * *



## Talk to us

If things are getting to you. Any time you like, in your own way - about whatever is on your mind.

- Free to phone 116 123
- Email: [jo@samaritans.org](mailto:jo@samaritans.org)
- Visit us: 13 Upper High Street, Winchester SO23 8UT





**JO HOOPER**  
HONS) RNMH REG.  
MBACP

**Counsellor, Psychotherapist, Coach**

Currently working online

[counselling@jhooper.co.uk](mailto:counselling@jhooper.co.uk)

<https://www.paranimo.co.uk/therapists/jo-hooper/profile>

*(click link for my video)*

023 8097 2243

WORKING WITH YOUR EMOTIONS, THOUGHTS  
AND FEELINGS

**CONTACT ME FOR AN INFORMAL CHAT TODAY**

