

The Ampfield Messenger



*The Parish Magazine of
St. Mark Ampfield*

April 2024

Vol 74 Issue 4 £1

www.acnb-church.org

Contents

4. Letter from Vanessa
5. Regular service pattern and Easter services
6. Benefice News
11. Report of PCC Meeting by Jennie Edward
12. Making our Churches Welcoming *Effective Hospitality* By *Sally Kerson*
14. *What happens at the Village Hall*
16. Baddesley Division County Councillor's Report 24/25
by Alan Dowding
17. Cartoon
18. Ron & Stella's Quiz Night
19. Thought for the Month
20. Village News
21. Identify the Plant
22. Ampfield Art Club Gallery
24. Friends of Chapel Wood by Graham Roads
26. Animals from the Bestiary: Camels by Liz Hallett
28. A Kitchen Garden (G4G) by Graham Roads
30. Easter Candle - The Process by Jo Sennett, from St Mary's,
Peterborough
31. Clue to Identify the plant
32. From the Archives: April 1989 and April 1992
34. A Prayer for Easter
35. Answers to Ron & Stella's Quiz and Identify the Plant
36. St. Mark's Rotas
37. Terms and conditions



Letter from Vanessa

Dear Friends

I love a bit of historical controversy, it's much more fun than Eastenders, and even more so when it's religious historical controversy! Despite the view of popular culture, it is very unlikely that the season of Easter is named after a Pagan goddess – it is much more likely that it is about the lengthening hours of sunlight in the day.

The Venerable Bede is the only primary historical source who mentions Easter being named after a Pagan goddess. In the 8th Century, Bede, writing about the month of April, commented ‘... and the Anglo- Saxon people call this month Eostre after one of their goddesses...’. But, significantly, there are no mentions of this goddess in any other Anglo-Saxon books or records. Bede has recently had a rather more scrutinised review, and it is noted that he seems to be more concerned with creating a history he wanted, than recording actual history.

Recent commentators suggest that the word Easter is more likely to come from the ancient German word ‘austron’ meaning dawn – ‘aust’ can be translated East, or towards the sunrise. So Easter takes its name from the dawning light emerging out of the darkness.

I wonder if you came to our Benefice Dawn service on Easter Day, set up high on top of the hill at St Denys Church, Chilworth? There is something very profound about the symbolism of the dawning light of Easter morning, the recognition that the light of Christ overcomes all fear, all darkness and even death itself. Why not join us at church for one of our services over the next 50 day season of Eastertide, as we celebrate the joy, the excitement and the awe of knowing that Christ has transformed life for each one of us through the cross.



Vanessa

Weekly service pattern

Sunday Services

	All Saints	St Mark	St Denys	St John
1st Sunday	11:00 Messy Church	09:30 Tidy Church	09:30 BCP Matins or Communion	11:00 Communion or Morning Prayer
2nd Sunday	11:00 Communion	09:30 Communion	09:30 informal Morning Prayer	
3rd Sunday	11:00 Communion	09:30 Communion or Morning prayer	09:30 BCP Matins or Communion	
4th Sunday	11:00 Communion	09:30 Communion		
5th Sunday	11:00 Communion	09:30 Communion		

Midweek Services

When	Where	What
Tuesday, 10:30	St Mark, Ampfield	Small group Communion in St Mark's room, followed by coffee
Wednesday, 19:00	All Saints, North Baddesley	Communion in a peaceful candle lit space in the midst of your busy week

Easter Day (31st March):
07:00 Dawn Communion at St Denys
09:30 Communion at St Mark
11:00 Communion at All Saints



Benefice News

Friends for Lunch - Next date Wednesday 17th April

Agne's Roast ham for our March lunch was delicious, followed by Clare's yummy chocolate bread and butter pudding. Nancy and her carer Anna won Ron and Stella's quiz.



Thank you:

Ron for all his sterling help at the lunches, collecting the money, running the raffle and the quiz (with Stella's help) and generally helping everything to run smoothly.

Pam for taking over managing the money and bookings and stepping in where needed.

The wonderful helpers who cook, serve and wash up.

And last but not least- Our loyal diners who make it such fun.

If you'd like to join us please contact Pam on 02380 411146.
Book early - our numbers are rising.

St. Mark's Stall at the Ampfield Market

Sat 6th April 10am - noon

Last month we raised £60. Thank you to all of you who have donated so generously. If you have anything for the April market please contact Chris or Kate (see p.2 for contact nos.).

Lay Vocations Morning

Saturday 6th April - POSTPONEMENT

This event has been postponed until later in the year.

Benefice News

Lent Lunches at St. Mark's

This year's lunches ended on a high on the 15th March. 21 people enjoyed Watercress, Leek and Potato and Spicy Lentil soups. £120 was raised, making a total of £221 which has been donated to The Romsey Foodbank and The Winchester Beacon night shelter. Every penny donated went to these charities. Thank you to all who attended.



St. Mark's Fête & Dog Show 11.30am Saturday 8th June

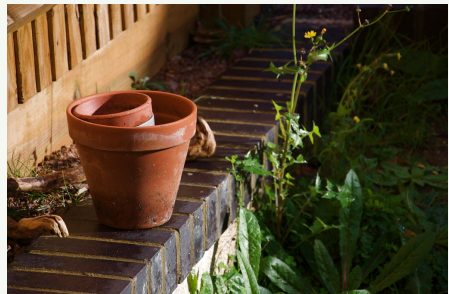
The annual St Mark's Summer Fete and Dog Show is to be held in the grounds of St. Mark's Church, Ampfield on 8th June 2024, starting at 11:30 am. The fete will include all the usual popular attractions - dog show, raffle, games and entertainment, BBQ, teas, beer tent and Pimms stall.

The cake stall will be returning this year. Please can you consider baking your favourite cake, or even two. If you can, it would be very helpful to advise Phil so that we know in advance how many cakes to expect.



The popular **plant stall** will return. With this in mind, people are kindly asked to consider donating plants, especially flowering plants and vegetables. Most garden centres offer trays of popular flowering plants in

plugs, which is a very inexpensive way of buying plants for those who do not have the facilities to grow them. the plant stall is also grateful for any surplus 3" pots.



Benefice News

Celebrating 70yrs of All Saints Church

Arrangements for the celebration tea are going well and we are now asking if you would like to attend the event on the afternoon of Sunday 7th April 3-5 pm, as this is needed for catering purposes. Please reply to this email. If anyone has any memorabilia including photographs of All Saints. For details about the afternoon please read [here](#).

Study Course

Here is another sneak preview of the **Rule of Life course** which starts on Wednesday April 24th 7.30pm.

Week 1 is all about relating.

Week 2 will focus on praying when we can either be alone with God or share this sacred space with others and we will explore the different ways of praying.

Craft Item Request

Beth is looking for empty cardboard egg boxes for one of the Children's Craft Morning which is taking place in the Easter School holidays. Please can you help?

Just leave any you have in the churches and they will find their way to All Saints, thank you.

Sunshine Saints - Fridays 10am - 11.30am

Every Friday we welcome families to the **Sunshine Saints baby and toddler group** in All Saints Church.

Social Hub at All Saints - Wednesdays 10am - Noon

An opportunity to have a go at some crafts, do jigsaws or just relax with a book that has been borrowed from the Community Library (also open on a Wednesday morning) or just sit and chat. There are free drinks and biscuits and sometimes other treats! It continues to be 10am - 12pm every Wednesday at All Saints Church, North Baddesley.

Benefice News

Welcome Café Thursdays at All Saints Church

Thursdays 10am - 12 noon.

An opportunity for everyone, especially those lonely or bereaved to meet.

Lunchtime Recitals St. Denys Chilworth

Wednesdays 24th April and 22nd May 1pm

24th April - Southampton Salty Sea Dogs:

Accapella group singing sea shanties and songs with a few jokes thrown in.

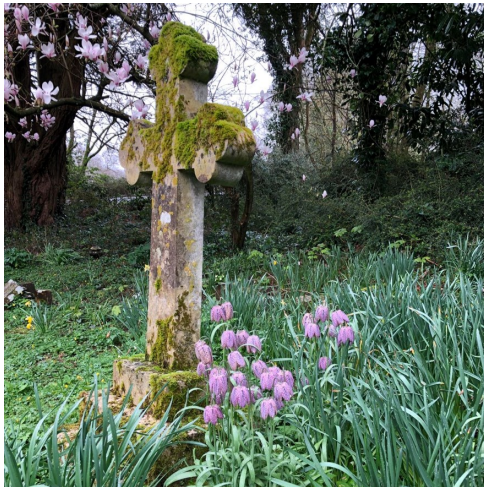
22nd May - Glorious Harmony:

A relaxed choir singing heart-warming meditative 3-part songs

The recitals start at 1pm. For further information please email

office@acnb-church.org or phone **023 8073 7617**.

For dates of future concerts, please keep an eye on our [calendar](#) and [events page](#) on the ACNB website.



The churchyard at St. Denys



INVITE YOU TO A FUN
Quiz Night
and raffle

St. Mark's Church Room, SO51 9BU
on Friday 3rd May 7.30pm



Tickets £5 each including nibbles



Teams of 6 (can be set up on the night)

Available on line bit.ly/3PSXnQz

(or call 07799 435715)

Website: acnb-church.org

Brief Report of St Mark's PCC meeting held on 7 March 2024 via Zoom

Vanessa opened our meeting with a prayer.

Our beautiful Church needs much work to be carried out, including urgent roof repairs, the porch leak and stonework repairs. These works are going to be extremely expensive, and Phil Budden, Churchwarden, is planning to make application to the National Churches Trust for financial help.

Trees

Phil has also been involved in a Tree Safety survey and unfortunately two large trees in the Churchyard urgently require felling; quotes for this work are being assessed.

St Mark's Room and the Labyrinth

A trial hole needs to be excavated on the east side of St. Mark's Room to check the subsoil in order to design the foundations. Although not close to any graves, because it is in the churchyard people can object to this if they wish. A sign will be posted giving people four weeks to do so. We need significant money to take this project forward, and are working with the Charity Spark who are helping us apply for funding.

Inclusive Church

Vanessa is delighted that all the parishes have agreed to join Inclusive Church. St Mark's will be added to their website and we will be able to use their logos on our publicity materials.

The Messenger

PCC hope everyone who receives the magazine via email is enjoying it. Chris and Rob Kerr work so hard on this wonderful publication, and if you would like to make a small donation that would be gratefully received. You can send by cheque payable to Ampfield PCC, with "The Messenger" written on the back.

Fete meetings are underway for this year's fete to be held on Saturday 8 June, 11.30 - 2.30 pm. If you would like to help with this event in any way, we would be delighted to hear from you. Please do get in touch with Phil Budden.

Our Annual Meetings will be held on Sunday 14 April at 11.00am, in St. Mark's Room. You would be very welcome to come along.

Jennie Edwards
PCC Secretary



Making our Churches Welcoming

Effective Hospitality

By Sally Kerson

I recently joined an online talk organised by the National Churches Trust. <https://www.nationalchurchestrust.org/> it was entitled 'Creating a Perfect Welcome' a very interesting hour full of information to help us welcome people into our churches. The week before I gave a presentation to Romsey Deanery Synod about the Small Pilgrim Places Network <https://www.smallpilgrimplaces.org/> and how they encourage churches to provide quiet spaces for reflection and prayer.

People visit churches for many reasons, perhaps to sit inside and have a moment of stillness and prayer. Others prefer to look at the architecture, the windows, monuments and the history connected with the building. (see my article first published in the Romsey Advertiser on page in last month's Messenger.) Because to quote from the National Churches Trust "Churches are literally treasure troves of artwork and symbolism relating to the spiritual life of the church and its congregation." The National Churches Trust commissioned a poll in December 2022 and have provided these facts, some of which you may find surprising.



Cont. ...

...Cont.

- ◆ *75% of adults agree that churches are important as providers of space for activities supporting local people, such as foodbanks*
- ◆ *73% agree they are an important part of the UK's heritage and history*
- ◆ *54% visited a church in the past year with 17% saying they actively sought out a church as a visitor or tourist*

Interestingly:

- ◆ *Younger respondents are more likely than older to have visited a church*
- ◆ *Muslims (38%) are more likely than Christians (22%) to have visited a church*

In this benefice we continue to find ways of effective hospitality to all who come through the doors of our churches. Many will visit when no one is around and so we want them to leave knowing that they have been welcomed and perhaps return having felt the presence of God.

Sally Kerson



*‘The chief requirement of the good life
is to live without any image of oneself.’
Iris Murdoch*

What happens in the Ampfield Village Hall every month?

MONDAYS

PILATES WITH HANNAH – Two sessions in the morning. Details at www.pilateswithaplomb.com

AMPFIELD PARISH COUNCIL regularly meet on a Monday evening for their ordinary meetings, planning meetings and other meetings. Details at

www.Ampfield.org.uk .

AMPFIELD CLICKERS informal and friendly, resumes knitting, crocheting, skill sharing and chatting (!) 3rd Monday evening Jan 2024.

Contact Jo on 07970 509450. Email joannehatley@aol.com

TUESDAYS

AMPFIELD BRIDGE CLUB friendly duplicate bridge. Every Tuesday (except at Xmas time) from 7pm to 10pm. If you require a partner or want more information contact Janet Cox on 07879 915726 or email janetwallace1@hotmail.co.uk New members always welcome.

WEDNESDAYS

TODDLER SENSE SALISBURY – two morning sessions. 13 months to 4 years. Call Sian on 07984 051713 or Email: salisbury@toddlersense.co.uk

1st AMPFIELD BROWNIES meet every Wed. evening during term time. 6pm to 7.30pm Tel. Sue Moore 01794 523947

ROMSEY MODELLERS Build model kits? Join this club on the 1st and 3rd. Wed. of each month 8pm to 10pm.. www.romseymodellers.co.uk

THURSDAYS

YOGA MORNING with Diana Craven 9.30 to 11.30am

E-mail: diana_craven@hotmail.com for details. This class is run temporarily by Gem of Gem Yoga and Wellness: gem@gemyogaandwellness.co.uk

AMPFIELD ART GROUP meets Thurs. afternoons during term time 2pm to 4pm. All abilities welcome Contact email: Julie@ampfield.org.uk

NEW PILATES CLASS Thursday evenings with Hannah Plomb

Details: www.pilateswithaplomb.com

FRIDAYS

YOGA ON FRIDAY MORNINGS with YogaByGaynor 9.30 to 10.30am All levels, Gentle, Vinyasa Flow Yoga. All welcome. Facebook:

@yogaByGaynor OR Email: yogabygaynor@yahoo.com

SATURDAYS

VILLAGE MARKET (Established 2000) (see p.13)

Ring Julie on 02380 254587. This is a great event to meet up with people.

CARD MAKING WORKSHOP WITH VANESSA. A range of crafts, monthly, 10am to 4pm. Details from Vanessa 01794 515490 or email

Ampfieldcards@gmail.com .

For general enquiries and hall bookings tel. Martin Hatley 07970 501050

Or visit our new website: www.ampfieldvillagehall.org.uk Or E mail:

info@ampfieldvillagehall.org.uk

SEE OUR NEW WEBSITE www.ampfieldvillagehall.org.uk and take a virtual tour, book the hall or buy tickets.

The Ampfield Market

(Established in 2000, now in its 24th year !)

**will take place
on**

Saturday April 6th

**From 10am to 12noon
in Ampfield Village Hall
(SO51 9BJ)**

Our Market has a great reputation, we regularly sell fresh fruit and veg supplied by Hansards in Awbridge and delicious bread and cakes supplied by Matts Bakery. Honey, preserves, plants and fresh flowers. Cards, wrapping paper and books. Collectables, unusual crafts and jewellery. Clothes, toys and puzzles. Bric a brac, seasonal treats and much much more !

**We serve fresh coffee and a wonderful selection of cakes throughout the morning.
Come along with friends and family to enjoy this special monthly community event.**

Parking and admission are always FREE.

All proceeds support the Village Hall. Registered charity no. 1057353

Contact Julie on 023 80254587 or
Julie@ampfield.org.uk for table bookings etc.

Next date. Saturday May 4th 2024

BADDESLEY DIVISION COUNTY COUNCILLORS 2024/25 report

Hampshire County Council Tax will rise this year by almost 5%. Band “ D “ Council Tax rising to £1,533.24p, an increase of £72.99. The Council tax overall raising £826m.354k. The Adult Social Care Revenue budget will gain 2% additional funding from this Council Tax increase, although with ever increasing demands, it remains insufficient.

Hampshire’s financial position is now very bleak indeed and the Council are now embarking on a comprehensive review to attempt to find further potential service reductions, as current savings proposals will fall short of the level needed. I did forecast this outcome in my last two County Councillor’s annual reports.

The County Council are holding a consultation on possible service reductions, to find another £132 million of saving through reductions to services. The closing of Waste Recycling Centres, further closures of Libraries, School Crossing Patrols, Passenger Transport reductions, Street Lighting and Highways Maintenance. This will also include Adult Social Care cost rises.

Our Highways have suffered neglect over many years and potholes have caused serious damage to vehicles. Along with flash flooding of our highways through inadequate drainage systems. At the Annual General Meeting of the Full Council, I asked the question of “ How, much compensation has the County Council paid out in the last twelve months to motorists using Hampshire’s roads from damage to their vehicle from pothole’s.” The response was £180K. I also asked, what percentage of those who claimed gained any compensation at all. It turns out that only 218 motorists have gained compensation out of 1597 claims and 1081 have been denied compensation and a further 298 are yet still to be decided.

Cont. ...

...Cont.

On a more positive note I was successful in gaining funding in Ampfield for improvements for highway works on Baddesley Road, and the extension of the street lighting scheme. The funding was gained from the Ampfield Meadows Care Complex planning application that was demanded by myself after been lobbied to seek lighting of this area by large numbers of residents.

I serve on the Health & Adult Social Care Select Committee and was selected to be a member of a panel required to review seven Care Homes, that do not currently meet the Care Quality Commission standards. After visiting the homes to satisfy the justification for such action. This was not an easy task, some now will be upgraded, and some closed to provide £173m of Capital Investment to build new homes to meet those with far more complex needs that have increased, along with our aging population.

HCC Cllr Alan Dowden



"The siege is over. He says he's given himself up for Lent"

Ron and Stella's Quiz Night

1. How many films did Sean Connery play James Bond in?
2. Which popular TV show featured House Targaryen and Stark?
3. Which company owns Bugatti, Lamborghini, Audi, Porsche and Ducati?
4. Which Williams sister has won more Grand Slam titles?
5. Which European Country was said to invent Hot Dogs?
6. What is the name of the Italian dessert made with coffee soaked Ladyfingers and Mascarpone cheese?
7. 60 to 65% of our bodies is made up of what?
8. Which of the Seven Wonders of the World is located in Egypt?
9. On Sunday 18th June 1815, which famous battle took place?
10. What was the name of the Rock Band formed by Jimmy Page?

Answers on p. 35



Thought for the Month

Dave Myers of the Hairy Bikers died in February. I am not a fan of cookery programmes but love the bikers and their friendly 'uncheffy' approach to cooking. Their last programme together was aired days after he died and ended with Dave saying:

"Let make these last miles count. Who knows what the future holds? But for the moment I'm living in the present and it's pretty fine"

The notion of living in the present, sometimes described as 'mindfulness', is well documented. However, how hard it is to achieve, especially in these times when there is so much to worry about. Dave Myers' words have reminded me to try to stop thinking about 'what if'. Here in Ampfield we are surrounded by beautiful woodland, we have wonderful neighbours and friends, St. Mark's is open for peaceful reflection throughout the day, we are truly lucky. Never mind the lack of mains drainage, gas, a decent phone signal and useless internet ... oh dear, here I go again!

So now I'm off to make the Hairy Bikers' chicken curry and count my blessings. In the words of his best friend Si King:



"I wish you God's speed brother, you are and will remain a beacon in this world. See you on the other side. Love ya."

Chris

Village News

The Village Hall Quiz Night.

On Friday 15th March the Village Hall committee organised another popular quiz night. There were ten teams of 6, some nibbles were provided but everyone brought their own food. Martin Hatley provided a well stocked bar. Denis Payne compiled 8 rounds of interesting and varied questions There was a generous raffle - the prizes were drawn during the interval. The quiz master was Trevor Easterbrook. The winning team members were awarded bottles of Prosecco and Smarties Easter eggs, the losing team went home with Cadbury's Creme Eggs. Everyone had a very enjoyable evening !

Dates to save -

Friday 26th July - a summer quiz night .

Saturday 26th October - Party Night with the Empty Frets providing the entertainment. Come along and join us for an great evening of music, wine, food, fun and dancing !!

The Village Hall AGM and Business meeting

Our Village Hall AGM took place on 25th March. Sadly, no members of the public attended and no new members were nominated. The Chairman, Denis Payne, gave a positive annual report. Hall bookings have been good following a decline during and after Covid. The very popular and successful monthly Market plays an important role in bringing the community together and providing a regular income which helps to maintain the hall. Our Treasurer, Trevor Easterbrook, presented the annual accounts.

We have had condensation issues with the roof and we are considering major remedial work which will be costly. We will need a significant grant which we will need to investigate. The cost of running the hall is increasing all the time, especially the cost of electricity which is effecting us all. Many of us volunteer our skills to carry out jobs like decorating, gardening or general maintenance which is why we desperately need new members to help share the load. If you would be interested in getting involved please contact julie@ampfield.org.uk and we would be delighted to welcome you to our team. Please take a look at the Village Hall website which went live last November. The address is ampfieldvillagehall.org.uk

Julie Trotter, Hall Secretary

**CAN YOU IDENTIFY THIS
PLANT GROWING IN
ST. MARK'S GRAVEYARD?**

CLUE ON P. 31



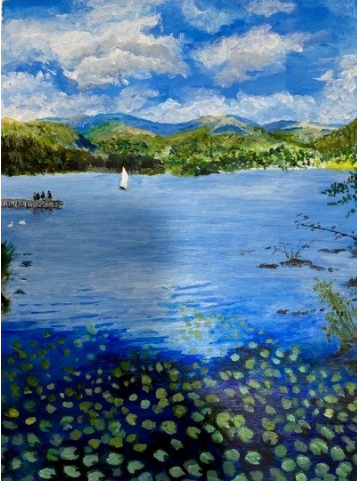
*From the St. Mark's
Register*



*Please pray for peace throughout
the world*

Ampfield Art Class Gallery

Julie Trotter's Art Class takes place on
Thursday afternoons
from
2-4pm at the Village Hall



View from the boathouse looking
Towards Ambleside
Hilary, Acrylics



Spring in the garden
Pauline, watercolour.



In the harbour
Julie, pen and watercolour.

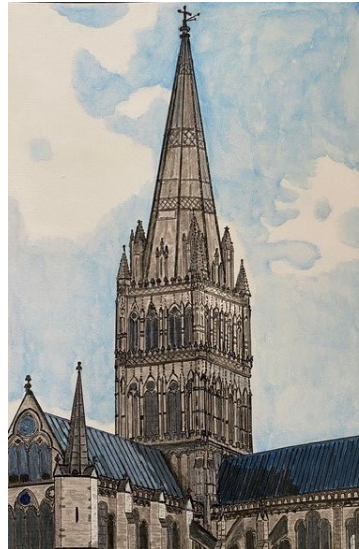


Miss Grumpy
David,
Pencil

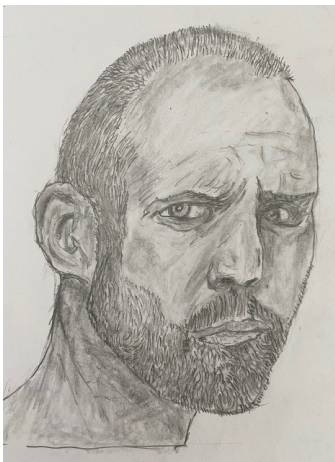
Ampfield Art Class Gallery



Summer landscape
Nick, watercolour.



Salisbury Cathedral
Graham, ink & watercolour



Portrait of Jason
David, pencil.



A summer paddle in the sea
Carle, watercolour.

F

riends
of
Chapel
Wood

By Graham Roads

As ever with our woodland working parties, we are very much at the mercy of the weather. It had been raining for continuously for days and everything was wet and slippery, so more rain on the day would have meant curtains for our morning's workload. As it happened, on this occasion we were very lucky - the weather was dry, and it stayed dry.

With it being so wet underfoot, our planned activities were always subject to change. For instance, we had hoped to clear away the wet leaves, which were covering the glade areas and the footpaths down by the fountain. However, this proved too time consuming as they tended to stick together as if glued, so we decided to work on improving the views around the woodland by cutting back some of the overgrown areas of Rhododendron.

In particular, we are trying to improve the longer-range vistas. We have a very attractive church and a stunning area of woodland; it would be good if people could see the church while walking around the wood and the wood whilst sitting in St. Mark's room. The rhodos are a problem but they can be managed, particularly if they are kept at a height of about a metre.



...Cont.

We felt we had enough person-power to be able to work effectively in two separate areas. We chose the area adjacent to the burial ground where the American memorial sits and the area behind St. Mark's room. The photos give a before and after perspective. Of course, the plants will put on fresh growth but, if we can keep them trimmed, they will be less intrusive than previously. Neither area is completely finished, we will do that next month, but the photos show what is possible. The area around the US airmen's memorial is part of the burial ground and designated as an area to scatter ashes.



On the subject of the burial ground, we have commissioned a landscaper to clear much of the vegetation to the rear, in order that it can be grassed, and the usable area extended. In so doing, we uncovered a lot of old builders' rubble. This now has to be removed before the job can be completed. Next week we hope to be able to start work on the cruciform. The old blighted box hedge has gone and we plan to replant with yew.

The Friends of Chapel Wood is a group of keen volunteers who look after Chapel Wood, the Ampfield community wood that surrounds St. Mark's church. New recruits are always welcomed, so if you fancy the idea of joining some like-minded neighbours for a few hours once a month, just turn up in the St. Mark's car park at 09:45 on the second Saturday of every month. **Graham Roads**

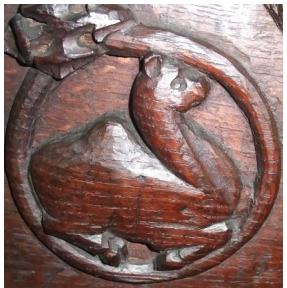


Animals from the Bestiary

Camels

by Liz Hallett

Now for something to amuse you! I have become fascinated in the wonderful carvings of animals, birds and fish which are found in many medieval churches. Why, for example, are there so many elephants, apes, tigers, lions, pelicans, camels,



foxes and so much else? (Yes, really!) Well, we need to put ourselves back into the mind-set of medieval people to find the reason.

For them, the church was at the centre of their lives but they were mostly illiterate, untravelled and superstitious, very ready to accept the Church's teaching. The belief at the time was that man is the highest of the animals, since we were created in God's image, so the rest of creation is for our instruction and enjoyment. Each animal therefore has characteristics which either teach us how to live a Christian life or give dire warnings as to what will happen if we follow the wrong path.



Three camels kneeling in humility: top, at Boston, above at Beverley Minster and right with a monkey's face at Faversham



Over the next few articles we can look more closely at some of these animals. But this month let's start with why we find so many camels in our churches. First I need to point out that many of these animals bear very little resemblance to the real thing, and the camel is a good example of this. Cont. ...

...Cont.

After all, the carvers have never actually SEEN a camel. They may have heard travellers' tales or seen drawings reproduced in books called 'bestiaries' by someone who had also never seen a camel, but whose pictures were often used as a pattern-book by woodcarvers.



More like a horse at Brent Knoll

Some of the results are delightful!

For a camel they often carved a horse - which of course they were familiar with - but with one or two humps on its back.

Why are they found in churches? The camel's main characteristic was seen as humility, since it kneels to take on its burden. People were thus reminded that Christ humbled himself and took on the sins of the world. On the other hand, the camel was believed to be lustful, and thus became a metaphor for prostitutes, clearly a bad thing - so you need to look at the carving to see which characteristic is being shown. Watch out for camels, it's the hump(s) which give the game away.



My favourite - one of 4 galloping camels at Denston



Liz Hallett

A Kitchen Garden (G4G)

By Graham Roads

You do not need to be weather forecaster to realise that spring is here, a very wet spring but spring, nevertheless. It is good to be able to get out into the garden, clear out the vegetable beds, and get everything clean and tidy for a new year. Over the past few weeks, the planting plan has been done, rotations considered and the ground prepared. All that remains is a few weeks of relatively dry weather to enable the ground to dry out and warm up, we can then start the new season's sowing.

It is great to still have one good crop still going strong from last year. In this case, it is the curly kale. Although it is starting to go to seed, there are still a few good pickings remaining. We have used it to make pesto, a bit robust but excellent as a base to a flatbread, called a piandina, which can be topped with tomatoes and olives. This pesto is also good on fried bread, with a poached egg on top.



Cont. ...

...Cont.

The greenhouse is the first place to show physical signs of life in the new season. By now, tomatoes, cucumbers and peppers should have their first leaves. Sometimes, this is the stage when these plants are at their most vulnerable. They must not dry out, nor do they need swimming lessons. There must be a bit of bottom heat but not enough to roast the tiny roots. If it all goes well, you will be rewarded with some healthy little plants. If not, there is still time to sow some



more. If all else fails, buy some little plugs from the garden centre. No one need know!!

As usual, all the information needed for growing vegetables successfully can be found on the RHS website (<https://www.rhs.org.uk/advice/grow-your-own>). This also provides a great summary and good ideas on what to do now as well as recipes. It would be great if we could all put together a collection of recipes,

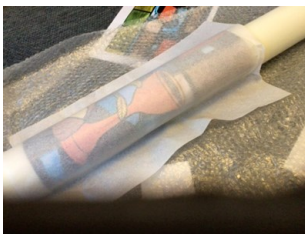
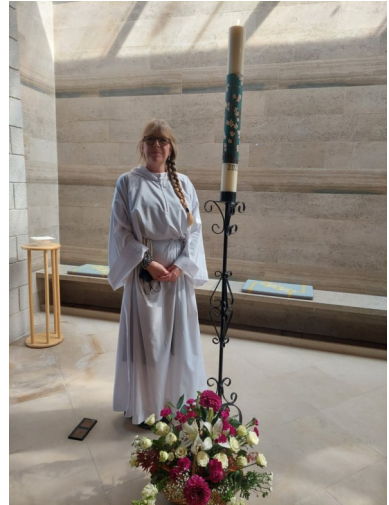
Graham Roads

Easter Candle - The Process

by Jo Sennett, from St Mary's, Peterborough.

I don't recall the exact year I first decorated the St Marys candle for Easter, it's been a while. I am though very aware of how the process has developed (and hopefully improved) for me each year creating a new image after careful thought and relating it to scripture as well as world and local events. Using wax paint was new to me four years ago and now is used alongside acrylics, inks and sometimes tissue paper. You may have seen a pattern of Artist influence with my Van Gogh period and the Piper stained glass windows at Coventry Cathedral.

Last year I was able to use a painting I had done as part of my own well-being through work. This year I have been drawn back to the colours and shapes found in the Piper windows and the simple messages through the bread and wine of the Eucharist.



....

May this life giving Bread always feed your soul and nourish your spirit.

May you always live your faith with joy.

May you always know the peace of Jesus, the light of his love, and the joy of his life within you.

So, Lent arrives and I get busy preparing and completing the design ready to be lit on Easter morning.

So as we eat the bread and drink the cup together in faith, we receive grace to meet whatever is our truest need, both as individuals and as a body.



CAN YOU IDENTIFY THIS PLANT? HINT:

IT SOUNDS LIKE A DARK CONFINED SPACE AND YOU MIGHT EAT A MEAL.

GO TO P. 35 FOR THE SOLUTION.

FROM THE ARCHIVES

APRIL 1992

Summer Fete

I hope you will book the date:

Saturday 1st July, 2 pm
at
Kingfisher House, Knapp Lane, Ampfield.

The loyal group of helpers who organise our annual church fete are already busy making arrangements and you will no doubt be contacted in due course and asked, of your kindness, to help in all sorts of ways (as, of your kindness, you always do). But here are two things to take immediate note of and, perhaps, to act upon:

1. We will be printing a handbill advertising the summer fete (the same size as a page of this magazine) to put into every house in the parish. Would you like to try your hand at designing this handbill? It needs a minimum of information on it - basically the day, time and place and a note that there will be many stalls and side-shows, various forms of entertainment, ice-creams, teas etc.etc. It needs to be visually attractive and arresting. We would like to hold a competition to find the best design, so if you will have a go (adults or children) send your entry to the vicar as soon as possible, and certainly by the end of April. The prize for the winning entry is the honour of having 500 copies printed and distributed!
2. For children we are going to hold two competitions at this year's fete and you may like the details now. First, a garden on a plate: bring your entry with you and it will be judged on the day. Secondly, how many different things can you get in a match-box (NB since the boxes must be all the same size, let me stipulate they should be 2 inches long, 1 and four-tenths wide and seven-tenths deep). Start collecting now!

Covenants

Why not help St Mark's financially *without* any cost to yourself? Did you realise that if you covenant your church collections, we can claim from the Inland Revenue the income tax you have paid relative to your gifts?

If this idea appeals to you please contact either of the churchwardens or Patrick Yates, telephone Chandlers Ford 267745 for details and a follow up visit.

FROM THE ARCHIVES

APRIL 1989

Annual General Meetings

Please come to our annual church meetings at which the churchwardens for the coming year are elected and at which certain other church officers are chosen: at which, also, reports for the past year in our church life are presented and items of general concern in the parishes discussed. All who live within the parish boundaries are warmly invited to attend; those on our church electoral roll have the right at these meetings to elect members onto the PCCs. The dates are:

Monday 10th April,

Hursley Annual General meeting at 7.30 pm in the parish hall.

Monday 24th April,

Ampfield Annual General meeting at 7.30 pm in the W.I. hall.



Parish Outing

Around St. Mark's day (April 25th) we have tried over the last few years to have some kind of parish event because this date was, I believe, Keble's birthday and, of course, St. Mark is the dedication of Ampfield church (it was consecrated on April 21st 1841). This year, at the instigation of the Ampfield Craft Group we are having a coach trip to the American Museum, just outside Bath, with a visit also to the lovely small town of Bradford-on-Avon. We plan to leave at 9.30 am (picking up arrangements to be announced later) and to return not later than 6.30 pm. Lunch will be either by picnic or in a pub, whichever people choose. The coach fare is £4.00 and the entrance charge for the Museum is £3.50 (slightly less for OAPs). We very much hope that many will want to come; please book as early as possible by having a word with Renate Moore or with the vicar.

Mission '89

Many of you will know that Billy Graham is visiting England this year to speak at three London venues in June. Arrangements are being made for live links (TV relays) and in the Guildhall, Winchester from June 26th to July 1st there will be an opportunity to see and hear Billy

A Prayer for Easter



Gracious God,

*as we reflect on Easter,
may we carry Your love and redemption in our
hearts.*

*Guide us in living out the Easter message daily
and sharing Your light with the world.*

Amen.



Answers to Ron & Stella's Quiz Night

1. Seven
2. Game of Thrones
3. Volkswagen
4. Serena
5. Germany
6. Tiramisu
7. Water
8. The Pyramids of Giza
9. The Battle of Waterloo
10. Led Zeppelin



ANSWER TO IDENTIFY THE PLANT IN ST. MARK'S CHURCHYARD:

IT IS THE LESSER CELANDINE (*RANUNULUS FIGARIA*) –



LOW GROWING WITH HEART SHAPED LEAVES. THE FLOWERS ARE GLOSSY YELLOW, USUALLY WITH 8 – 12 PETALS THAT APPEAR IN MARCH TO APRIL TIME. YOU WILL FIND IT IN MOSTLY SHADY DAMP PLACES AROUND GRAVES.

ANON

Rotas for St. Mark's in April

Date	1 st Reading	2 nd Reading	Intercessions	Sides	Coffee	Music
7 April	Tidy Church				Jean	Mark & Abbie
14 April	Acts 3: 12 - 19 Doreen	1 John 3: 1 - 7 Mark B	Jean	Stephen Ron	Doreen	Organist
21 April	Acts 4: 5 - 12 Rob	1 John 3: 16 - 24 Jennie E	Ron	Heather C Jennie E	Jennie E	Jean
28 April	Acts 8: 26 - 40 Heather S	1 John 4: 7 - 21 Rob	Sally	Mark B Robyn	Stella	Organist

Flowers: April: Jean
Extra flowers for Easter please



CONTRIBUTIONS and CONTENT

DONATIONS may be payable by cheque, please post to:

Attn. Adrienne, All Saints Church, Church Close, North Baddesley
SO52 9EQ made out to **Ampfield PCC** and on the reverse please
specify: 'THE MESSENGER MAGAZINE'.

Or paid directly:

Sort code: 30-92-94 Account No: 01254722

Account Name: St Marks Church PCC / Reference: Magazine

ADVERTISING

Please send to: **Kate McCallum** at Kathleen.mccallum@icloud.com

Application for designs and rates for both commercial and
charity advertisements will be agreed before submitting copy/drafts
for inclusion as JPEGs in high resolution not PDFs or for any graphic
design work that you may require to be published. The quality,
copyright and content are the sole and legal responsibility of the
advertiser.

The views expressed by contributors are not necessarily those of
Editors or PCCs nor will they accept any liability for such. They are
not responsible for any of the views, statements or opinions
expressed in the contributions and any reliance placed on them by
the reader is at the readers sole risk.

Copyright is the legal responsibility of the contributor and not that
of the editors or PCC with regard to any content. Advertisements are
not endorsed or guaranteed on any product or services referred to
in, or the content of, such contributions. Every care is taken on
content, but possibly there could be cause for misunderstanding
that was not intended.

AMPFIELD PARISH COUNCIL

Kate Orange - Clerk to Council

2 The Square

Braishfield Road, Braishfield

Romsey SO51 0PQ

Tel: 07922 118840

email: clerk@ampfield.org.uk

www.ampfield.org.uk

Simplify your life with our top-rated service

UW is the only home services provider to bundle everything onto one, simple, monthly bill. That includes gas, electricity, broadband, landline, mobile and insurance.

And because we're Which? Utilities Brand of the Year 2020, you know you'll be in good hands.



My name is Natalie and I help people save money on their boring old bills - for FREE. You may not have heard of Utility Warehouse before - but we've actually been around for over 24 years! We are a multi award winning British company with award winning customer service and a UK call centre.

Find out more...Natalie Day
natalie@dropintheocean.co.uk 07887602483

Here for all of your grave care needs



The Graveside Sisters

Head stone cleaning, Letter re-painting
Weeding, Tidying and General care.

Tel 07810111592 or 07810810476

Email... Emma@thegravesidesisters.com

Visit.. Www.thegravesidesisters.com

Facebook.. Www.facebook.com/TheGraveSideSisters

NIGEL GUILDER and family

FAMILY OWNED FUNERAL DIRECTORS

Nathan House, 27 Hursley Road, Chandler's Ford, SO53 2FS



Nigel Guilder Dip FDMBIFD

Lucy Guilder Dip FD MBIFD

John Firth Dip FD MBFID

24 HOUR PERSONAL SERVICE

02380 262 555

www.nigelguilder.co.uk

Pre-paid Funeral Plans Available



Blackwell & Moody Ltd.

Monumental Masons and
Restoration Specialists

Jeffrey Higgins

Magdalen Masonry Works,
Alresford Road, Winchester,
Hampshire. SO21 1HE

Tel: 01962 852 476

Fax: 01962 850 865

Email: blackwellandmoody@gmail.com

**Over 100 years
of service
to the local
community**



The Family Owned Funeral Directors

The Peace family have proudly served Romsey and the surrounding area for three generations.



Experienced and Flexible

Honesty, integrity and transparency are at the heart of our beliefs.

We understand every funeral is unique.

Modern Professional Facilities

Our premises have complete facilities on site and our dedicated team are available to support you 24 hours a day.

www.ahcheater.co.uk

ROMSEY
01794 513393

NORTH BADDESLEY
02382 358860

AVAILABLE 24 HOURS

Computer Problems?	
	PC, Mac, iPads, Screens Windows XP 10 & add Menus Virus Fixes & Tune up Data recovery, Printing Broadband & Networking
Independent Impartial Advice Home Visits	
Laptops, Macs & Phones	PC's, viruses, Home setups
Call Colin: 01962 713890 07727 481220	Call Gerry: 01962 712674 07900 845814
10% off labour with Parish Magazine over	

**AMPFIELD to ROMSEY
DIAL A RIDE**

A transport service for disabled or elderly people who cannot use ordinary buses. We provide a door to door service using specially adapted vehicles, for shopping trips and other individual transport needs.

Tel: 01264 356808
www.tvcs.org.uk



Good Roots Garden Services



 I have 20 years experience in horticulture and specialise in garden maintenance, small landscaping & repair works' I can either work with you to improve your outside space or offer a 'spruce up' service.

 Please get in touch so I can come and chat with you about what your garden needs with a free, no-obligation visit.

 07749 299227

 Tel. Pete Hale on :07749299227 or email pete@goodrootsgardening.co.uk





Talk to us

If things are getting to you. Any time you like, in your own way - about whatever is on your mind.

- Free to phone 116 123

Email: jo@samaritans.org

- Visit us: 13 Upper High Street, Winchester SO23 8UT



JO HOOPER

HONS) RNMH REG.
MBACP

Counsellor, Psychotherapist, Coach

Currently working online

counselling@jlhooper.co.uk

<https://www.paranimo.co.uk/therapists/jo-hooper/profile>

(click link for my video)

023 8097 2243

WORKING WITH YOUR EMOTIONS, THOUGHTS
AND FEELINGS

CONTACT ME FOR AN INFORMAL CHAT TODAY

