

# The Ampfield Messenger



*The Parish Magazine of  
St. Mark Ampfield*

**December 2024**  
And  
**January 2025**  
Vol 74/5 Issue 12 /1

[www.acnb-church.org](http://www.acnb-church.org)

# The Parish Church of St Mark, Ampfield

*Our vision: To be channels of God's love in the world*

## Ministry Team

**Rev. Vanessa Lawrence, Vicar** Tel: 023 80 737617

Email: [vicar@acnb-church.org](mailto:vicar@acnb-church.org)

**Rev. Ann Devereux, Curate** Tel: 02380 737617

**Mrs. Sally Kerson, Lay Minister and Office Administrator**

Tel: 02380 737617

**Mr. Jonathan DeVile, Lay Minister** Tel: 02380 736522

**Beth Robertson, Children and Families Worker**

For any enquiries about baptisms, weddings or churchyards please contact the parish office, telephone no: 023 8073 7617

Email us at: [office@acnb-church.org](mailto:office@acnb-church.org)

Website: [www.acnb-church.org](http://www.acnb-church.org)

Facebook: [www.facebook.com/acnbchurch/](https://www.facebook.com/acnbchurch/)

The office is staffed 9 - 12 noon, Monday, Wednesday & Friday.

***Please let us know if you have any news of those who are sick, in trouble, leaving or about to arrive.***

**Churchwardens:** Mr. Mark Braund Tel: 01489 860218

Email: [markb@acnb-church.org](mailto:markb@acnb-church.org)

Mr. Phil Budden Tel: 07799 435 715

Email: [philb@acnb-church.org](mailto:philb@acnb-church.org)

**Secretary PCC** Jennie Edwards Tel: 02380 365041

Email: [jenniee@acnb-church.org](mailto:jenniee@acnb-church.org)

**Treasurer PCC** Mrs. Pamela Morffew Tel: 02380 411146

Email - [pamm@acnb-church.org](mailto:pamm@acnb-church.org)

***Cheques should be made payable to Ampfield PCC please***

**Gift Aid Secretary** Mrs A Jeffery, Tel: 02380 252865

Email: [adriennej@acnb-church.org](mailto:adriennej@acnb-church.org)

**Magazine Editor** Chris Kerr, Tel: 01794 367104

E-mail: [chrisk@acnb-church.org](mailto:chrisk@acnb-church.org)

**Advertising** Kate McCallum Tel: 07738467350

Email: [katem@acnb-church.org](mailto:katem@acnb-church.org)

**DEADLINE: The third Friday of each calendar month.**

Contributions to this magazine are always welcome, however it may be necessary to edit or shorten articles. Note that the views and opinions expressed in this publication are not necessarily those of the editor or the Parochial Church Council. Advertisements in this publication do not carry the endorsement of the editor or the Parochial Church Council.

# Contents



4. Letter from Vanessa
5. Weekly service pattern
6. Christmas activities and services at St.Mark's
7. Christmas activities and services in the Benefice
- 8 - 14 Benefice News
15. Ron and Stella's Quiz Night
16. Castaway of the Month - read about our Curate Ann Deveraux's choice of music, book and a luxury.
19. Jokes
20. Friends of Chapel Wood by Graham Roads
- 22 - 25 Village News
26. Ampfield Art Gallery by Julie Trotter
28. 'The Grandmother's Toolbox' a Poem by Lyn Smith
29. Mushrooms (Fungi) by Sally Kerson
30. Answers to Ron & Stella's Quiz Night and St. Mark's Register
31. A Christmas Prayer
32. Rotas for St. Mark's

\*\*\*\*\*

*Thanks to all our readers and contributors and a Happy Christmas  
and peaceful New Year  
The Editors*

\*\*\*\*\*



**Keith and Chrissie's annual Christmas display at their  
home in Boyatt Wood**

## *Letter from Vanessa*

### *Dear Friends*

*“Hope” is the thing with feathers -  
That perches in the soul -  
And sings the tune without the words -  
And never stops - at all -*

Wrote Emily Dickinson, probably in 1861. Hope isn't easy to find in today's uncertain times, much seems precarious and gloomy. And yet the words of this poem remind us that hope is something that we must be relentless in holding onto, and that even when we are unaware of the tune, we keep on singing!

We have reached Advent in our Church year, that time of waiting for Christmas. In the Church, we are not (quite) yet in celebratory mood, but we wait, and we hope, for the coming of the Christ-child. Our altar is clothed in purple, there are no flowers in the church, and we spend time in prayer, thinking about the coming of the incarnate God, and what that might mean for our faith journey.

This can seem slightly at odds with the rest of the world – especially when Christmas decorations are going up all around, you have probably lost Wham-ageddon already, and have maybe already wrapped gifts and written cards! But, perhaps, getting going with our Christmas celebrations is about relentlessly singing the tune without the words. Christmas will come, the child will be born, and through that we know that we are infinitely, unconditionally loved!

With love and prayers this Advent

*Vanessa*

p.s talking of singing a tune – come and join us carol singing in the White Horse and Potters Heron on 6<sup>th</sup> December – don't forget your Santa Hat!!



# Weekly service pattern

## Sunday Services

	All Saints	St Mark	St Denys	St John
1st Sunday	11:00 Messy Church	09:30 Tidy Church	09:30 BCP Matins or Communion	11:00 Communion or Morning Prayer
2nd Sunday	11:00 Communion	09:30 Communion	09:30 informal Morning Prayer	
3rd Sunday	11:00 Communion	09:30 Communion or Morning prayer	09:30 BCP Matins or Communion	
4th Sunday	11:00 Communion	09:30 Communion		
5th Sunday	11:00 Communion	09:30 Communion		

## Midweek Services

When	Where	What
Tuesday, 10:30	St Mark, Ampfield	Small group Communion in St Mark's room, followed by coffee
Wednesday, 19:00	All Saints, North Baddesley	Communion in a peaceful candle lit space in the midst of your busy week



*See next pages for Christmas activities and services at St. Mark's and around the benefice.*



# CHRISTMAS SERVICES AND ACTIVITIES AT ST. MARK'S

## **Sunday 1st December**

Services as usual for 1st Sunday of the month  
including Messy Church where one of the craft activities will be making a  
Christingle

## **Friday 6th December**

ACNB will be carol singing in the pubs in Ampfield:  
7:30pm at The White Horse  
8:30pm at The Potters Heron

## **Sundays 8th and 15th December**

Services as usual

## **Sunday 22nd December**

09.30 Holy Communion  
7:30pm Community Carols

## **Tuesday 24th December - Christmas Eve**

No midweek Communion  
3pm Christingle / Crib service

## **Wednesday 25th December - Christmas Day**

9am Communion

## **Sunday 29th December**

Services as usual

## **Tuesday 31st December**

10:30am midweek Communion as usual



# CHRISTMAS SERVICES AND ACTIVITIES IN THE REST OF THE BENEFICE

## **Sunday 1st December**

Services as usual for 1st Sunday of the month

Messy Church will be making a Christingle

## **Sunday 8th December**

Services as usual for 2nd Sunday of the month

## **Thursday 12th December**

10am Carols and Cakes at Welcome Café at All Saints

## **Sunday 15th December**

Services as usual for 3rd Sunday of the month

4pm Carol service at St John's

## **Thursday 19th December**

7:30pm Carol service at St Denys'

## **Sunday 22nd December**

Services as usual for 4th Sunday of the month

## **Monday 23rd December**

7pm Alternative Christmas at All Saints - a quiet contemplative service for those who are sad or struggling, whilst others may be celebrating

## **Tuesday 24th December - Christmas Eve**

5pm Crib Service at All Saints

11.30pm Midnight Communion at St John's

## **Wednesday 25th December - Christmas Day**

9am Communion St Denys'

10.30am Communion All Saints

*No Social Hub or Digital Hub*

*No All Saints midweek Communion*

## **Thursday 26th December**

*No Welcome Café*

## **Sunday 29th December**

Services as usual for 5th Sunday of the month

## **Wednesday 1st January**

*No Social Hub or Digital Hub*

*No All Saints midweek Communion*

## **Thursday 2nd January**

10am Welcome Café is on as usual



## Benefice News



### Friends for Lunch Wednesday November 20th



We had our inspection by Karen from Environmental Health, and we are delighted to say that once again we were awarded five stars! It was certainly worth all the extra work - the hall and kitchen sparkled after a deep clean.



Twenty diners enjoyed beef casserole and Charlie's enormous and delicious trifle - there were seconds all round so we have decided to increase the portion sizes of puds in future!



As we were rather short of helpers, Rosea, Clare and Chris enlisted their husbands to do the washing up. This was a great success, thank you Mark, Simon and Rob. Thanks also to Ron and Stella for another brilliant quiz.

Our next meal will be Christmas Lunch at the Golf Club in December, now fully booked. In January we will meet on Wednesday

19th, please make sure you book your place with Pam. Thank you to all our loyal diners and helpers. In April we celebrate our 10th anniversary — watch this space!

**Chris**



## Benefice News

### St. Mark's stall at the Ampfield Market Sat Dec. 7th

We are grateful to everyone for their generous donations. We will be at the market in December and in the run up to Christmas will be selling **Christmas decorations and gifts**. If you have anything to offer please contact Chris (see p.2 for contact no.).

### Autumn Coffee Morning at St. Mark's



There was such a lovely atmosphere in St. Mark's Room where the Autumn Coffee Morning took place. The weather was terrible – wind and rain – but so many people braved it and enjoyed coffee with mince pies and cakes. There were lovely



things to buy; a colourful table of Christmas decorations was run by Chris (there are some decorations left which will be on the Church table for sale at the market on Saturday 7 December), some books, jewellery, cakes/ chutneys/marmalades and marzipan fruits! There was a “Guess the weight of the Dundee cake” which Adrienne had made. We all wanted to win that! The raffle was very popular with some super prizes.

Thank you to all who came along to support the event, and also a big thank you to all who helped on the morning and donated raffle prizes. It was a very successful and enjoyable morning.

Jennie

### Carol singing around Ampfield Friday 6th December

The Friends of St Mark's are planning to sing carols in our local pubs on Friday 6th December:

7:30pm at The White Horse,

8:30pm at the Potters Heron hotel.

Support and joining in the singing would be welcome! We're collecting for Crisis at Christmas on this link:

<https://www.justgiving.com/page/friendsofstmarks-170102329243>



Phil

# Benefice News

## Churchyard Working Party

We came back for a second busy session clearing a massive area of rhododendron on our boundary with Chapel Wood and were again lucky with the weather.



There are a dozen Woolley family graves in the churchyard, although the current family have all moved away. However, Frank Woolley's granddaughter, great granddaughter and great grandson came for 2 visits and completely cleared the big shrubs overlooking Frank's grave.

So we now had a massive pile of branches cut and stacked ready which needed burning before our local fauna started nesting and hibernating. We had a spectacular bonfire with 5 of us working hard for a couple of hours throwing it all on. Eventually we were left with a pile of glowing embers. When we decided it had burnt enough, we hosed it down and spread it across the bonfire pit. It was very satisfying to see how we'd reduced that pile to almost nothing.



**Phil**

## The Children's Society

A very big thank you to all The Children's Society box holders for all your kind donations. All boxes have now been opened and counted.

I have been able to bank **£831.87**. A wonderful year. Thank you.

Bless you



**Heather**

# Christingle Crib Service

## Christmas Eve

- 24th December @ 3pm
- in St Mark's Church
- Dress up as your favourite Nativity character and make a Christingle!



## Ampfield Community Carols

22nd December @ 7.30pm  
in St Mark's Church

followed by mulled wine & mince pies.

search @acnb-church for details



# Benefice News

## Sunshine Saints Wednesdays at St. Mark's during term time

Sunshine Saints is on \*Wednesday mornings, 10:30 - 12, in St Mark's room for play, chat and refreshments. Each week there will be a special craft for your children to enjoy and take home afterwards. All children are very welcome to bring their parents, carers or grandparents. We would love to see you.

**Beth**

\*(Not the 3rd. Wednesday)



## Pilgrims Discussion Group Saturday 14th December 10am – 11.30 am

Come and join us for our new monthly Benefice discussion group, with lovely coffee and cake! Every second Saturday morning in St Mark's Room, 10 - 11:30 am - do [get in touch](#) if you would like more information.

We will use a range of resource material to explore questions of faith. Our ethos is that we are exploring together, and there are no wrong answers - all are welcome to this relaxed and friendly group.

**Vanessa**



# Benefice News

## Digital Hub - All Saints: Wednesdays 10.30am - 12 noon

If you know anyone who would like some extra help when using their laptops, tablets or phones then please pass on details about digital hub. This is a group that has been set up to support those who are finding difficulty with such technology. They meet every Wednesday from 10.30 - 12 noon in All Saints.

## Social Hub - Wednesdays at All Saints 10am - 12 noon

During the morning there will be an opportunity to have a go at some crafts, do jigsaws or just relax with a book that has been borrowed from the Community Library (also open on a Wednesday morning) or just sit and chat. There are free drinks and biscuits and sometimes other treats!

## Welcome Café at All Saints Thursdays at 10am

The café is for any and everyone in the community to come and meet friends for a catch-up and enjoy great coffee. There is no charge for coffee but donations are welcome. We particularly welcome those who find themselves lonely or who have been bereaved. There are trained 'listeners' who will be happy to sit with you and if appropriate signpost to other helpful organisations, all in complete confidence.



## Sunshine Saints Fri: 10:00am at All Saints (term-time only)

Sunshine Saints is the toddler and baby group which meets every Friday in term time from 10:00am to 11:30am in All Saints Church. It is an opportunity for the children to have fun playing together. There are snacks for the children and tea and coffee for those who accompany them, suggested donation: £2.





## Benefice News

Join us for our Advent Reflection group, in four parts, where we will be delving into the lives of biblical characters from the book, 'Women of the Nativity', by Paula Gooder. Set within the culture and context into which Jesus was born, the stories give voice to those whose stories are often spoken over louder voices. Perhaps we can imagine our own stories finding their place too. Contact Ann or Cilla for further details.



# ADVENT REFLECTIONS

*Women of the Nativity*

### ***The Details:***

30 November 10-1pm St Denys

4 December 2-3.30pm All Saints

11 December 2.3.30pm All Saints

18 December 2.3.30pm All Saints



### ***For further info contact:***

Ann or Cilla

[annd@acnb-church.org](mailto:annd@acnb-church.org)

All stand alone sessions with coffee and cake. Hope you can join us!

---

## Ron & Stella's Quiz Night

1. How did Otis Reading die?
2. How many children are in the Von Trapp Family in the Sound of Music?
3. What was the first feature length movie ever released?
4. What game is called The Sport of Kings?
5. Who did Elton John and Bernie Taupin initially write 'Candle in the wind 'for in 1973?
6. What are the two outermost colours on the upper and lower ends of a rainbow?
7. Which mammal has no vocal chords?
8. What is the tallest breed of dog in the world?
9. What year did the Berlin wall fall?
10. How many bones does a shark have?



**Ron Cobb**

Answers on p. 30



## Castaway of the Month ~

### Ann Deveraux

Here is an insight into our Curate Ann's choice of music, reading and a luxury item if she found herself alone on a desert island.



"I love music and always have done. Growing up in a very noisy and musical family there was no escape. My earliest memories are of people singing and dancing around the piano or record player, before the age of computers and social media. I now try to be a grown up in the car by listening to Radio 4, but at home I listen to playlists, YouTube and CDs, as well as Premier Christian Radio

worship songs to get me going in the mornings!" Here is some of my favourite music:

**Die Fledermaus by Strauss (1874)** which brings back fond memories of waltzing across the stage whilst singing in this operetta at college in Henley-on Thames. There is nothing like a Viennese waltz to get your feet tapping!

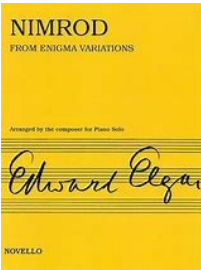
**Groove is in the heart by Deee-Lite (1990)**, still on the theme of dance, Mas que Nada by Sergio Mendes, feat. Black Eyed Peas (2006) and Happy by Pharrell Williams (2013) all have the capacity to lift my spirits and to change or lighten my mood. Please wear your headphones if you try this at home because you need the volume on max!

**Message in a Bottle by The Police (1979)** is an absolute classic and reminds me of the freedom I felt when leaving home to make my own way in life. This track does portray our collective loneliness but stresses that we are not alone in being alone. The message of hope is that God is with us wherever we are. Have you ever sent a message in a bottle? 1979 was also the year I joined the police force, following in my family footsteps!

Cont. ...



...Cont.



**Nimrod from the Enigma Variations by Elgar (1899)** holds a special memory for me. The harmonies and dulcet tones are a haven, amidst a busy pace of life - likened to the other variations book-ending this one. This variation has the capacity to still my mind.

**John Williams theme to the movie Schindler's List (1993)**, is another classical favourite of mine portraying the plight of the vulnerable and marginalised, and offering hope in a fallen world. The dramatic top note played by the violin near the end is something to behold. People are extraordinary and God can use the most unlikely volunteers

My son is a great Marvel fan and we often watch Iron Man together (when I can get him off the Xbox). We particularly like **Black Sabbath's Iron Man (1972)**, revised in the sequel Iron Man 2. This is where I get to show Gen Z how the air guitar is really played! Not sure where this love of rock music came from but it's certainly a track where you can let your hair down.



Lively worship has coloured my journey of Christian faith and one of my favourites is, **Raise a Hallelujah by Bethel Music (2019)**. It encourages us to raise our voices and our faith, over and above the circumstances we find ourselves in, and has helped me to stay grounded over the past few years.

**Ave Maria (Islamo-Christian version) by Tania Kassis (2013)** is a wonderful international arrangement featuring a mix of Ave Maria and the Adhan (Muslim call to prayer). I love this combination as it portrays all people of all faiths being made in the image of God, whom I believe Jesus died for.

Cont. ...

...Cont.

And finally it would be remiss of me not to include my favourite Christmas song which is without doubt, **Mary did you know? by the cappella group Pentatonix (2014)**. The lyrics describe the life and miracles of Jesus and his purpose on earth, ending with the ultimate line, 'Mary ... the weeping child you're holding, is the great I Am'. How the maker of the universe came to this earth as a human baby beats me, but it is the good news for all of us this Christmas time. A saviour born that we might have peace on earth and eternal life with him.

I was an avid reader of Ladybird books and Enid Blyton's Famous Five Series in my childhood. Adventure was a key theme which led me to travel worldwide, courtesy of British Airways and British Caledonian Airways, or was it the uniform, I can't remember! Anyway, I ended up living in Kentucky, USA doing some unpaid mission work whilst driving around in a Pontiac Firebird which I loved. On returning to England I sold homes for a property developer in London Docklands before training as a Montessori teacher in Wimbledon. This was the beginning of my teaching/business career where I owned and managed a Montessori School in Surrey until my son came along – such a blessing!



Obviously books rated high on my list of priorities but they were often text books and academia before returning to Winnie the Pooh and The Gruffalo and other Julia Donaldson classics. After training and working for eight years as a child social worker I completed a PGCE in secondary teaching in Religious Education (RE) and Personal, Social & Health Education (PSHE). I was then called to ordination and the rest is history. As a curate I'm back to reading academic books again but would definitely want to take Netflix box-sets in book form should they ever become available, along with my Bible of course!

***Luxury Item:*** A Sudoku puzzle book in large print, including the answers just in case!"

***Like to share your choices with Ampfield? Drop us an email.***



What do reindeers say before they tell you a joke?  
This will sleigh you ...

What do you call Santa's little helpers?  
Subordinate clauses!



# **F**riends of Chapel Wood by Graham Roads

For many months, we have been looking forward to the time when we can begin to plant the area to the west end of St. Mark's Church. We have long wanted to introduce flowering woodland plants, or those that produce fruit and with an interesting leaf structure. Now, as dormancy approaches, we can start the process of creating tranquil woodland havens, giving interest throughout the year, and very suited to quiet contemplation.



Our first task is planting the flowering bulbs, around 800 in all. Although in some ways, starting with bulbs is not an ideal choice, it has been dictated largely by the availability of both materials and manpower. Our initial selection includes native bluebells, snowdrops, wood anemones and native daffodils.

After some initial fiddling around, we began with the snowdrops, followed by the anemones. We were each given a little planting guide, an area to work in and a variety of weapons – and off we went.

## **Planting woodland bulbs – Snowdrops**

- \* Dig a hole to a depth of 4 to 5 inches***
- \* Put a handful of compost mixture in the bottom of the hole***
- \* Place bulb on the compost, tip upwards***
- \* Refill hole***
- \* Spacing between holes 5”***

Cont. ...

...Cont.

If we had a prize who could plant most plants the quickest, it would have been won easily by our military representative, who devised a very cunning plan. First, dig all your holes, then in with the compost, finally plant the bulb and finish off. We will have a further tranche of 400 bulbs to be planted; interviews to join our production line will start next Thursday!



Whilst most were having a good time, sowing bulbs balancing on a 45+° slope, there was more serious stuff to be done. The glade was covered in leaves. If left unattended, this does not help the grass. One of the team, pleading an injured knee and wielding a slightly asthmatic blower, set off to clear them. It was good going to have cleared most of it by the time we went home.

We are lucky in that we have a brilliant team of volunteers. It is good fun and helpful to the community in the process. If you fancy the idea of joining some like-minded neighbours for a few hours once a month, just turn up in the St. Mark's car park at 09:45 on the second Saturday of every month. (NB, it is a great way to lose any surplus Christmas pounds!)

No doubt many of us will see each other over the Christmas period, so all that is left now is to wish all our volunteers and, importantly, all of our readers, a very happy Christmas and a good 2025.



**Graham Roads**



# **The Ampfield Market**



**(Established in 2000, now in its 25<sup>th</sup>  
year !)**

**will take place  
on**

**Saturday December 7th  
From 10am to 12noon  
in Ampfield Village Hall  
(SO51 9BJ)**

Our Market has a great reputation, we regularly sell fresh fruit and veg supplied by Hansards in Awbridge and delicious bread and cakes supplied by Matts Bakery. Honey, preserves, plants and fresh flowers. Cards, wrapping paper and books. Collectables, unusual crafts and jewellery. Clothes, toys and puzzles. Bric a brac, seasonal treats and much much more !

**We serve fresh coffee and a wonderful selection of cakes  
throughout the morning.**

**Come along with friends and family to enjoy this special  
monthly community event.**

Parking and admission are always FREE.

All proceeds support the Village Hall. Registered charity no. 1057353  
Contact Julie on 023 80254587 or [Julie@ampfield.org.uk](mailto:Julie@ampfield.org.uk) for table  
bookings etc.

**Next date. Saturday February 1<sup>st</sup> 2025**



# Village News



Dates to save -

## Wednesday 11th December.

The annual pantomime -  
A Christmas Carol. Doors  
open at 5.30pm for a 6pm  
start.

Tickets £5 children / £10  
adults. Squash and biscuits  
provided. See p. 17. Book  
early to avoid  
disappointment.



## Saturday 7th December

Lots of goodies to tempt you to visit the next  
Market on Saturday December 7th in the village  
hall between 10-12 pm . This is our sparkling  
Christmas event with a visit from Father  
Christmas and the annual charity raffle. Looking  
forward to seeing you there !



**Julie Trotter and  
the Market team.**



**COMING TO AMPFIELD SOON!**

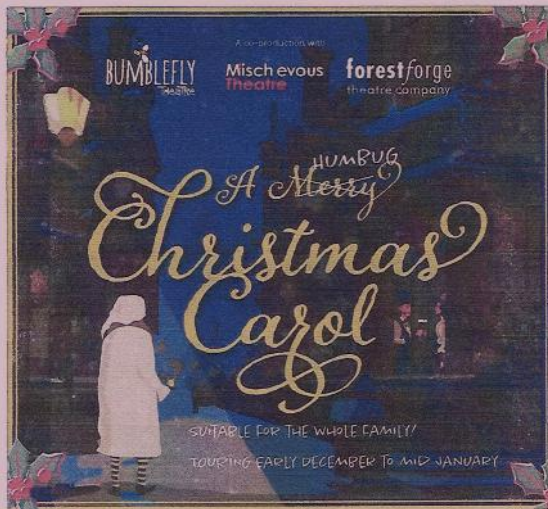
***Bumblefly Theatre Company* and Friends return to  
Ampfield Village Hall on Wed. 11<sup>th</sup> December 2024  
In  
**'A Merry/Humbug Christmas Carol'****

**(A light hearted pantomime for the whole family)**

Starting at 6 pm prompt (doors open at 5.30pm)  
Tickets remain at same price! (unreserved) Adult £10 Children £5  
(Inc. Squash or coffee and HobNobs!)

Available from Martin Hatley Tel. 07970 501050

E-mail: [info@ampfieldvillagehall.org.uk](mailto:info@ampfieldvillagehall.org.uk)



***Please book early.***

## WHAT'S ON IN THE AMPFIELD VILLAGE HALL - JOIN IN ONE!

### MONDAYS

**PILATES WITH HANNAH** – Two sessions in the morning. Starting at 9.15 & 10.20am. Mixed ability mat class. Details at [www.pilateswithaplomb.com](http://www.pilateswithaplomb.com)

**AMPFIELD PARISH COUNCIL** Ordinary, planning and other meetings on a Monday evening. Details at [www.Ampfield.org.uk](http://www.Ampfield.org.uk)

### TUESDAYS

**AMPFIELD BRIDGE CLUB** is a very popular club playing friendly duplicate bridge. It meets every Tuesday evening (except at Xmas time) from 7pm to 10pm. If you require a partner or want more information contact Janet Cox on 07879 915726 or email [janetwallace1@hotmail.co.uk](mailto:janetwallace1@hotmail.co.uk) New members always welcome.

### WEDNESDAYS

**TODDLER SENSE SALISBURY** – two morning sessions. 13 months to 4 years. Call Sian on 07984 051713 or Email: [salisbury@toddlersense.co.uk](mailto:salisbury@toddlersense.co.uk)

**1<sup>st</sup> AMPFIELD BROWNIES** meet every Wed. evening during term time. 6pm to 7.30pm Tel. Sue Moore 01794 523947

**ROMSEY MODELLERS** Build model kits? Want to get more from your hobby? Join this club on the 1<sup>st</sup> and 3<sup>rd</sup>. Wed. of each month 8pm to 10pm..

[www.romseymodellers.co.uk](http://www.romseymodellers.co.uk)

### THURSDAYS

**YOGA MORNING with Diana Craven** . We are pleased to welcome back Diana to her regular class. 9.30-10.30 am. Please note her new email address for further details [cravendiana18@gmail.com](mailto:cravendiana18@gmail.com)

**AMPFIELD ART GROUP** meets Thurs. afternoons during term time 2pm to 4pm. Very friendly atmosphere. Beginners and those wishing to develop their skills welcome. Contact email: [Julie@ampfield.org.uk](mailto:Julie@ampfield.org.uk)

**NEW! PILATES WITH HANNAH PLOMB NOW HAS TWO THURSDAY EVENING CLASSES.** The Regular Class starts at 6.15 and a special beginner's class at 7.20pm. For details: [www.pilateswithaplomb.com](http://www.pilateswithaplomb.com)

### FRIDAYS

**YOGA ON FRIDAY MORNINGS with YogaByGaynor** 9.30 to 10.30am All levels, Gentle, Vinyasa Flow Yoga. All welcome. Facebook: @yogaByGaynor OR Email: [yogabygaynor@yahoo.com](mailto:yogabygaynor@yahoo.com)

### SATURDAYS

**VILLAGE MARKET (Established 2000)** 1<sup>st</sup>. Saturday of every month 10-12noon (except Jan. and Aug.). See poster for details. Interested in renting a table? Ring Julie on 02380 254587 or email [Julie@ampfield.org.uk](mailto:Julie@ampfield.org.uk).

**CARD MAKING WORKSHOP WITH VANESSA.** A range of crafts taught, meets monthly, normally on the second Saturday of each month from 10am to 4pm. Details from Vanessa 01794 515490 or email [Ampfieldcards@gmail.com](mailto:Ampfieldcards@gmail.com) .

*For general enquiries and hall bookings tel. Martin Hatley 07970 501050 Or visit our new website: [www.ampfieldvillagehall.org.uk](http://www.ampfieldvillagehall.org.uk) Or E mail: [info@ampfieldvillagehall.org.uk](mailto:info@ampfieldvillagehall.org.uk)*

**NEW DIARY DATES:** ***FUN QUIZ NIGHT returns on FRIDAY 22 NOVEMBER '24***  
***Wednesday December 11<sup>th</sup> is Panto Time again – O yes it is ! The ever-popular Bumblefly and Forest Forge Theatre companies return with their fun version of 'A Christmas Carol'.***

# Ampfield Art Class Gallery

Julie Trotter's Art Class takes place on  
Thursday afternoons  
from 2-4pm at the Village Hall



Woodseaves Cutting, Shropshire Union Canal - Stephanie, watercolour .



Rueben - David, pencil .



A winter hunt - Carle, inks.



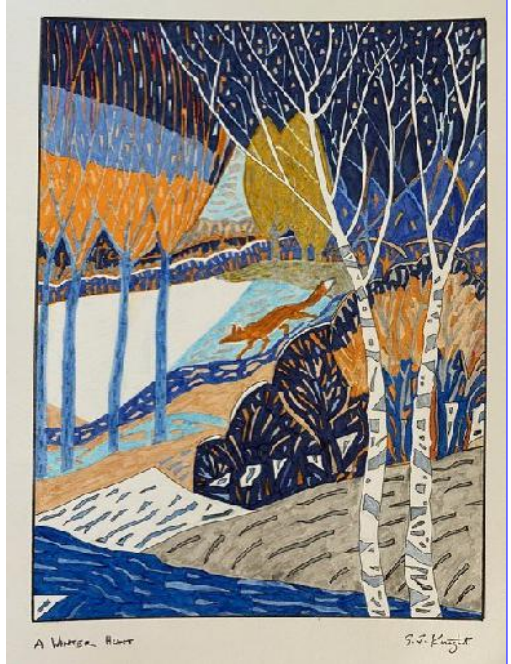
# Ampfield Art Class Gallery

A winter hunt - Graham , inks.



The Woodshed - Frank,  
watercolour and inks.

Spiny Artichoke - Pauline ,  
watercolour.



## THE GRANDMOTHER'S TOOLBOX

The love unbounded and the myriad memories  
to pass on about their mother as a child and growing up  
support goes both ways and wonderful to share  
our lives and experiences  
able to pass on the light and dark of my life  
and knowing that they can tell me anything  
I've done it all and worse  
I can spoil all four with fashion fun and travel  
and share their dreams of what they'd like to be  
they are the best present that my daughter ever gave me  
and my son-in-law he must have done his bit  
my toolbox is so full of love it's hard to shut the lid  
the greatest gift I've ever had after having my daughter  
is to be a grandmother



**Lyn**

# Mushrooms (fungi)

by Sally Kerson

Mushrooms are trending at the moment; you see them in household décor such as fabrics and ornaments. There also seem to be more varieties to buy in the supermarkets for cooking with than before. It's also possible to drink mushroom coffee, which isn't exactly pure mushroom but has coffee bean mixed with it. There are wild mushrooms and cultivated mushrooms. Picking mushrooms for commercial use is not allowed without a licence and in some woods, it is recommended not to pick for personal use



either, particularly as edible mushrooms can be confused with poisonous ones.

Mushrooms look so beautiful in their natural habitat, and many can be seen in our churchyards. In St. Mark churchyard there are a variety of mushrooms. Recently it was

exciting to see a clump of blue mushrooms, although they did appear to have been eaten by some kind of animal but still very beautiful.



To carry on the theme of mushrooms these have been turned from the wood taken from St. John the Baptist churchyard, elm and cherry and they stand on a piece of cedar of Lebanon wood from the tree in St. Marks churchyard.





## Answers to Ron & Stella's Quiz Night

1. Plane Crash
2. 7
3. Snow white and the seven dwarves
4. Chess
5. Marilyn Monroe
6. Red & Violet
7. Giraffe
8. Great Dane
9. 1989
10. Zero



### *From the St. Mark's Register*



*Funeral:*

David John Pay at St. Mark on Tuesday 26th November

*Please remember him in your prayers*

## **A Christmas Prayer**



**Loving Jesus,  
you were born in a stable but worshipped by the angels.**

**Be with all who are lonely,  
and with all who feel distant from celebrations.  
Be for us a living hope that lightens their hearts.**

**Amen.**



## Rotas for St. Mark's

Date	*	Sides	Reader 1	Reader 2	Intercessions	Coffee	Music
1 Dec 9.30	Café Church					Heather C	Mark & Abbie
8 Dec 9.30	Holy C	Sally C Phil	Mark B Malachi 3:1-4	Heather S Philippians 3:3-11	Jean	Jennie	Clive
15 Dec 9.30	Holy C	Chris K Jennie	Chris K Zephaniah 3:14-20	Jennie Philippians 4:4-7	Rob	Jean	CDs
22 Dec 9.30	Holy C	Stephen Jennie	Jean Micah 1:2-5a	Robyn Hebrews 10:5-10	Sally	Karen	Clive
22 Dec 19.30	<b>Community Carols - Volunteers please</b>						
24 Dec 15.00	<b>Christmas Eve - Christingle and Crib Service – Volunteers please</b>						
25 Dec 09.00	Holy C	Stephen n Robin	Jean Isaiah 9:2-7	Mark B Titus 2:11-14	Team	No coffee	Clive
29 Dec 09.30	Holy C	Ron Mark B	Jennie 1 Samuel 2:18-20, 26	Robyn Colossians 3:12-17	Jean	Stella	CDs

Flowers - Jennie (Greenery until Christmas) -

***Extra Christmas Arrangements Please***

## **CONTRIBUTIONS and CONTENT**

**DONATIONS** may be payable by cheque, please post to:

Attn. Adrienne, All Saints Church, Church Close, North Baddesley  
SO52 9EQ made out to **Ampfield PCC** and on the reverse please  
specify: 'THE MESSENGER MAGAZINE'.

Or paid directly:

Sort code: 30-92-94 Account No: 01254722

Account Name: St Marks Church PCC / Reference: Magazine

### **ADVERTISING**

Please send to: **Kate McCallum** at [Kathleen.mccallum@icloud.com](mailto:Kathleen.mccallum@icloud.com)

Application for designs and rates for both commercial and charity advertisements will be agreed before submitting copy/drafts for inclusion as JPEGs in high resolution not PDFs or for any graphic design work that you may require to be published. The quality, copyright and content are the sole and legal responsibility of the advertiser.

The views expressed by contributors are not necessarily those of Editors or PCCs nor will they accept any liability for such. They are not responsible for any of the views, statements or opinions expressed in the contributions and any reliance placed on them by the reader is at the readers sole risk.

Copyright is the legal responsibility of the contributor and not that of the editors or PCC with regard to any content. Advertisements are not endorsed or guaranteed on any product or services referred to in, or the content of, such contributions. Every care is taken on content, but possibly there could be cause for misunderstanding that was not intended.

## **AMPFIELD PARISH COUNCIL**

**Kate Orange - Clerk to Council**

2 The Square

Braishfield Road, Braishfield

Romsey SO51 0PQ

**Tel: 07922 118840**

**email: [clerk@ampfield.org.uk](mailto:clerk@ampfield.org.uk)**

**[www.ampfield.org.uk](http://www.ampfield.org.uk)**

# Simplify your life with our top-rated service

UW is the only home services provider to bundle everything onto one, simple, monthly bill. That includes gas, electricity, broadband, landline, mobile and insurance.

**And because we're Which? Utilities Brand of the Year 2020, you know you'll be in good hands.**



My name is Natalie and I help people save money on their boring old bills - for FREE. You may not have heard of Utility Warehouse before - but we've actually been around for over 24 years! We are a multi award winning British company with award winning customer service and a UK call centre.

**Find out more...Natalie Day**  
**natalie@dropintheocean.co.uk 07887602483**

Here for all of your grave care needs



## *The Graveside Sisters*

Head stone cleaning, Letter re-painting  
Weeding, Tidying and General care.

Tel 07810111592 or 07810810476

Email... Emma@thegravesidesisters.com

Visit.. Wwww.thegravesidesisters.com

Facebook.. Wwww.facebook.com/TheGraveSideSisters

# **NIGEL GUILDER** Ltd

**FAMILY OWNED FUNERAL DIRECTORS**

Nathan House, 27 Hursley Road, Chandler's Ford, SO53 2FS



**Nigel Guilder Dip FDMBIFD**

**Lucy Guilder Dip FD MBIFD**

**John Firth Dip FD MBFID**

24 HOUR PERSONAL SERVICE

**02380 262 555**

**[www.nigelguilder.co.uk](http://www.nigelguilder.co.uk)**

Pre-paid Funeral Plans Available



**Blackwell & Moody Ltd.**

Monumental Masons and  
Restoration Specialists

**Jeffrey Higgins**

Magdalen Masonry Works,  
Alresford Road, Winchester,  
Hampshire. SO21 1HE

Tel: 01962 852 476

Fax: 01962 850 865

Email: [blackwellandmoody@gmail.com](mailto:blackwellandmoody@gmail.com)

**Over 100 years  
of service  
to the local  
community**



**The Family  
Owned Funeral  
Directors**

The Peace  
family have  
proudly served  
Romsey and  
the surrounding  
area for three  
generations.



**Experienced and Flexible**

Honesty, integrity and transparency are at  
the heart of our beliefs.

We understand every funeral is unique.

**Modern Professional Facilities**

Our premises have complete facilities on site  
and our dedicated team are available  
to support you 24 hours a day.

**[www.ahcheater.co.uk](http://www.ahcheater.co.uk)**

**ROMSEY**  
01794 513393

**NORTH BADDESLEY**  
02382 358860

**AVAILABLE 24 HOURS**



Computer Problems?	
	PC, Mac, iPads, Screens Windows XP 10 & add Menus Virus Fixes & Tune up Data recovery, Printing Broadband & Networking
Independent Impartial Advice Home Visits	
Laptops, Macs & Phones	PC's, viruses, Home setups
<b>Call Colin:</b> 01962 713890 07727 481220	<b>Call Gerry:</b> 01962 712674 07900 845814
10% off labour with Parish Magazine over	

<p><b>AMPFIELD to ROMSEY DIAL A RIDE</b></p> <p>A transport service for disabled or elderly people who cannot use ordinary buses. We provide a door to door service using specially adapted vehicles, for shopping trips and other individual transport needs.</p> <p><b>Tel: 01264 356808</b> <b>www.tvcs.org.uk</b></p>
---

* * * * *		* * * * *
* * * * *	<b>Good Roots Garden Services</b>	* * * * *
* * * * *	I have 20 years experience in horticulture and specialise in garden maintenance, small landscaping & repair works' I can either work with you to improve your outside space or offer a 'spruce up' service. Please get in touch so I can come and chat with you about what your garden needs with a free, no-obligation visit.	* * * * *
* * * * *	07749 299227	* * * * *
* * * * *	Tel. Pete Hale on :07749299227 or email <a href="mailto:pete@goodrootsgardening.co.uk">pete@goodrootsgardening.co.uk</a>	* * * * *
* * * * *		* * * * *
* * * * *		* * * * *



## Talk to us

If things are getting to you. Any time you like, in your own way - about whatever is on your mind.

- Free to phone 116 123

Email: [jo@samaritans.org](mailto:jo@samaritans.org)

- Visit us: 13 Upper High Street, Winchester SO23 8UT



**JO HOOPER**  
HONS) RNMH REG.  
MBACP

**Counsellor, Psychotherapist, Coach**

Currently working online

[counselling@jhooper.co.uk](mailto:counselling@jhooper.co.uk)

<https://www.paranimo.co.uk/therapists/jo-hooper/profile>

*(click link for my video)*

023 8097 2243

WORKING WITH YOUR EMOTIONS, THOUGHTS  
AND FEELINGS

**CONTACT ME FOR AN INFORMAL CHAT TODAY**

A photograph of the King Edward VI Preparatory School building, a large red brick structure with multiple chimneys and a gabled roof. In front of the building, a group of eight children in school uniforms and one adult woman are standing on a green lawn. Overlaid on the bottom half of the image is the school's crest, which features a shield with various symbols, a crown on top, and a banner below that reads "DIEU ET MON DROIT". Below the crest, the text "EST. 1553" is visible. At the bottom of the image, the school's name "KING EDWARD VI PREPARATORY SCHOOL" is written in a serif font, followed by the website "kes-prep.school". At the very bottom, there are three social media icons: Facebook, Twitter, and Instagram.

**KING EDWARD VI  
PREPARATORY SCHOOL**  
[kes-prep.school](http://kes-prep.school)

f x @