

The Ampfield Messenger



*The Parish Magazine of
St. Mark Ampfield*

**May 2026
Vol. 76 Issue 5 £1**

www.acnb-church.org

The Parish Church of St Mark, Ampfield

Our vision: To be channels of God's love in the world

Ministry Team

Vicar: Interregnum

Rev. Ann Devereux, Curate

Tel: 02380 737617

Mrs. Sally Kerson, Lay Minister and Office Administrator

Tel: 02380 737617

Mr. Jonathan DeVile, Lay Minister

Tel: 02380 736522

Mr. Keith Atton, Lay Minister

Beth Robertson, Children and Families Worker

For any enquiries about baptisms, weddings or churchyards please contact the parish office, telephone no: 023 8073 7617

Email us at:

office@acnb-church.org

Website:

www.acnb-church.org

Facebook:

www.facebook.com/acnbchurch/

The office is staffed 9 - 12 noon, Monday, Wednesday & Friday.

Please let us know if you have any news of those who are sick, in trouble, leaving or about to arrive.

Churchwardens:

Mr. Mark Braund

Tel: 01489 860218

Email: markb@acnb-church.org

Mr. Phil Budden

Tel: 07799 435 715

Email: philb@acnb-church.org

Treasurers and Gift Aid Secretaries Abbie West, Cathy Stokes

Email: treasurers@acnb-church.org

Magazine Editor

Chris Kerr,

Tel: 01794 367104

E-mail: cl.kerr@hotmail.com

Advertising

Mr. Phil Budden

Tel: 07799 435 715

Cheques should be made payable to ACNB PCC

DEADLINE:

The third Friday of each calendar month.

Contributions to this magazine are always welcome, however it may be necessary to edit or shorten articles. Note that the views and opinions expressed in this publication are not necessarily those of the editor or the Parochial Church Council. Advertisements in this publication do not carry the endorsement of the editor or the Parochial Church Council.

Contents

4. Letter from Ann
5. Regular Service Pattern
6. 'Churches are not just places of worship but a vital support for Communities': by Sally Kerson
8. Jokes
9. Ron and Stella's Quiz Night
- 10 - 17 Parish News
18. What's on in the Parish every week
19. What's on in the Parish every month
20. From the Archives
22. Answers to Ron and Stella's Quiz Night
- 23 - 25 Village News
26. Julie Trotter's Art Class Gallery
28. 'Socks' by Charlie Brown
29. 'Summer' - a poem by Christina Rossetti
30. Thought for the Month by Paul Oliver
32. Friends of Chapel Wood by Graham Roads
34. A Prayer for Christian Aid Week
35. Contributions and Content



Carolyn Allen

Dear Friends

“The Church is not the building, it’s the people, it’s not just the gathering, it’s also the scattering...”

These words are often credited to John Wimber (American Quaker Minister). They were written to emphasise the importance of the people rather than the building. Those who gather within churches for worship, are then commissioned to scatter. Meaning as Christians, we are to take our faith out into our everyday lives. I agree with most of these sentiments, but church buildings have and are becoming hugely important, not only for worship but for other activities. This is twofold; to help with the financial upkeep of the buildings and to provide support for the ‘scattered’. In 2022 a book was published entitled ‘How Village Churches Thrive’ it is a practical guide giving examples of how churches all over the country have utilised their buildings and become hubs for their communities.

Over the many years I have been associated with the churches in this parish I have made some positive connections with many people who have never joined us for worship, or only occasionally. However, they have come to view the church as a welcoming and supportive place, some have also volunteered help with events and activities. If you can help make our buildings welcoming, long lasting and thriving communities for the future do please get in touch. Maybe you have suggestions of your own? If so, we would love to hear about it.

With love Sally

(I have written an article to accompany this letter and it is on page 6).



Weekly service pattern

Sunday Services

	All Saints	St Mark	St Denys	St John
1st Sunday	11:00 Messy Church	09:30 Café Church	09:30 BCP Matins or Communion	11:00 Communion or Morning Prayer
2nd Sunday	11:00 Communion	09:30 Communion	09:30 informal Morning Prayer	
3rd Sunday	11:00 Communion	09:30 Communion or Morning prayer	09:30 BCP Matins or Communion	
4th Sunday	11:00 Communion	09:30 Communion		
5th Sunday	11:00 Communion	09:30 Communion		

Midweek Services

When	Where	What
Tuesday, 10:30	St Mark, Ampfield	Small group Communion in St Mark's room, followed by coffee
Wednesday, 19:00	All Saints, North Baddesley	Communion in a peaceful candle lit space in the midst of your busy week



Need a break from the hurly burly of life? St. Mark's is open daily from 10am - 4pm

Churches are not just places of worship but a vital support for Communities

As the years have gone by communities have lost many local assets, such as pubs, banks, shops and social spaces. Government and local Council cuts have ensured the loss of even more public buildings, along with the reduction to public transport. But at the heart of a community there is usually a church, be it ancient or modern. However, people have different views of such a religious building. Some would not go near it even if it offered comfort warmth and even fun. The reason being to them it is still a place of worship; they sadly see the people within the building having an ulterior motive other than just offering hospitality!



Covid damaged so many of the routines in society that we often took for granted and we continue to pick through the rubble left behind. Much of society hadn't given a second thought to the activities that tick along in the background. But when we experienced the reality of social isolation for ourselves, and churches shut their doors in March 2020, it wasn't just the hymns and the sermons that came to an end. All those lunch clubs, toddler groups and social activities bringing people together ceased to exist. There was a revelation that all those 'nice things' churches do are in fact essential to the fabric of our society.



Cont. ...

...Cont.

Churches do offer a sense of belonging and community far beyond their weekly service routine, which can be particularly beneficial in an increasingly disconnected world. They can provide a space where people can come together, build meaningful relationships, and support one another, creating a strong, interconnected community that can withstand societal pressures and challenges.

Just a couple of examples of the many activities that the churches in this parish offer (please see elsewhere in the magazine) is St. Mark's Church Ampfield monthly 'Friends for Lunch'. At which there is a diverse mix of great volunteers from both church and the local community. It is the same for 'The Open Teapot' which runs from All Saints church in North Baddesley. Most of the volunteers have no connection with the church but feel a real sense of ownership as well as knowing that they are helping their community.

The church plays a vital role in shaping society by embodying values that promote love, compassion and justice and it is important that it continues to be there, especially for those affected by loneliness and poverty. Every week, church buildings across the country host thousands of community projects: food banks, lunch clubs, parent & toddler groups etc. A huge amount of social action happens in the 'mixed zone' between church and community and long may it continue.



Sally



A Scots lady was testing children in her Glasgow Sunday School class to see if they understood the concept of getting into heaven. I asked them, she said,

"If I sold my house and my car, had a big jumble sale and give all my money to the church, would that get me into heaven?"

"No!" the children answered.

"If I cleaned the church every day, mowed the garden and kept everything tidy, would that get me into heaven?"

Again, the answer was

"No!"

By now I was starting to smile.

"Well, then, if I was kind to animals and gave sweets to all the children and loved my husband, would that get me into heaven?"

Again, they all answered

"No!"

I was just bursting with pride for them. I continued,

"Then how can I get into heaven?"

A six year old boy shouted,

"Yuv got tae be deid!"

Kinda brings a wee tear tae yir eye....!

Ron and Stella's Quiz Night

1. What is the only mammal capable of true flight?
2. What animal has the longest tongue?
3. How many continents are there on earth?
4. Which is the seventh planet from the sun?
5. What is the square root of 256?
6. What was the first name of Argentinian soccer star Maradona?
7. Which film features the song 'My heart will go on'?
8. Which local business specialises in very nice roses?
9. Which U.S. city is widely considered the birthplace of jazz?
10. Which Mammal lays eggs?

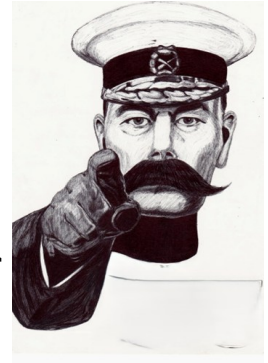


Answers on p.22

Parish News Ampfield

St. Mark's Fete Saturday 13th June

Planning for the Ampfield fete and dog show on 13th June is well underway. It will be the usual bustling event with lots of dogs, games, food and stalls. To make it a success we are looking for donations of a variety of items - jewellery, bottles, toiletries, plants, boxes/bars of chocolate, children's clothes, homemade jam/chutney and cakes. Details of how to donate will be provided closer to the time but it would be helpful to know if you plan to donate a cake so we can make sure we have enough - please contact Phil Budden. Similarly, if you can spare a couple of hours to help out on the day, please let us know.



**Ampfield Fete
needs you!**

St. Mark's stall at the Ampfield Market Next Market Saturday 2nd May 10am - noon Check out that summer wardrobe!

Due to popular demand we will sell pre-loved clothes again. Now's the time to get those summer clothes out of storage! Chris and Pam will be happy to collect any you wish to donate.

Chris

Church Cleaning

If anyone would like to help with cleaning the Church (taking it in turns on our monthly rota) that would be very helpful. It is best to do this in pairs to be safe, and does not take very long to Hoover, sweep, and dust! If you would like to offer or chat about this please contact Jennie Edwards:

Tel: 02380 365041;

Email: jennie@acnb-church.org.

Thank you so much.

Jennie

Parish News

Ampfield

Friends of St. Mark's Hearts and Voices

On Saturday 25th April the Southampton based gospel choir 'Heart & Voice' entertained us in the church at St Mark's. There were traditional gospel songs interspersed with modern classics which we were encouraged to join in with song sheets provided. We sang along to 'Bridge over Troubled Water', 'Lean on me' 'You've got a Friend' and others including a 'round' where we all sang at different times.



We had drinks and nibbles before the show and during the interval - we also had a raffle. We'd like to thank all who came along and contributed to a really fun evening helping us to raise nearly £400; of which we donated £50 to Heart & Voice for their chosen charity. We'll definitely be inviting them back!

Stephen

Parish News

St Denys

St. Denys Lunchtime Recitals and Talks

The next talk will be on **Wednesday 6th May** starting at 1pm and it will be a remote, live presentation from the Barn Owl Trust. Kate Jellyman is the Conservation Officer who will be delivering the talk.. As usual there will be refreshments afterwards.

All Saints

Sunshine Saints, our baby and toddler group, offers monthly lunch club too.

Sunshine Saints is our very popular North Baddesley baby and toddler group run on Friday mornings, 10am - 11:30 during term time at All Saints Church. The session consists of free play in the church, with refreshments offered to adults and snacks offered to children at 10:30. The suggested donation is £2 for a family for each session. Sunshine Saints is an opportunity for adults to meet and chat with other adults, and our helpers, and for their children to play in a safe and caring environment. We love to welcome our regular families and extend a warm welcome to new children, and their adults, who choose to join us.

Friday Lunch club for children and their adults happens once a month after a Sunshine Saints session. Lunch is open to everyone who joins us at Sunshine Saints and these sessions are popular with our regular families. We provide a main dish, which often consists of jacket potatoes, cheese and beans, along with a pudding and fresh fruit.



Parish News

Readers for All Saints

We are short of people to read the lessons on a Sunday morning at the 11am service. If you feel you can help with this then please reply to this email. There is a rota so it doesn't mean that you are committed to every week. Let us know if you are interested in helping.

Major Roof Repairs

Thanks to **Test Valley Borough Council's** *Community Delivery Fund*, we are making critical repairs to the roof at All Saints, North Baddesley. A grant of over £38,000 from Test Valley Borough Council, plus £13,000 from the PCC (the church's trustees) means that we can now repair and insulate the pitched and flat roofs. Without access to these funds, we would have had to patch and fix as things went wrong, which is ultimately more expensive and time-consuming. Now we can be confident that our building will be used by the community far into the future. We are extremely grateful for all the support that we've received from Test Valley Borough Council in helping us apply for this grant.



Pearly Gates - The Rehearsal! Saturday 2nd May @ All Saints Church, Awbridge 7pm until 9.30pm

Bishop Rhiannon is going to be talking about her life so far. There will be music, photographs and refreshments.

Contemporary Worship Sunday 3rd May All Saints Church, Awbridge 7pm - 9.30pm

Bishop Rhiannon will be attending this service. Please contact Ann on 02380 737617 if you would like to know more about the service.

Sally

Parish News

St. Marks Minnows Baby and Toddler Group

A very important visitor arrives at Minnows:-

Just before Easter, we at Minnows had a very important visitor arrive. Anne was brought by her daughter Jane to see how we were getting on with our wonderful Baby and Toddler group. Anne is a very well established member of our local community, unfortunately she has not been able to come to church for a while but keeps up to date with all that is going on in our Church and the Community.

Anne's granddaughter Scarlet and great granddaughter Riley come to Minnows and we felt that we needed to celebrate this occasion with this photograph.

Minnows meet on a Thursday morning in term time.
9.30am- 11am (Kettle on from 9.15am).

Heather Claxton



Parish News

Registered Charity 1214465

Church Fete and Dog Show

Saturday 13th June

11.30 am - 2.30 pm

St. Marks Church

Ampfield SO51 9BU

In Church Grounds and Chapel Wood

JOIN US FOR LOTS OF FUN!

- Fun Dog Show
 - Cream teas
 - Cake stall
 - BBQ
 - Games for all
 - Plant Stall
 - Craft Stalls
- and much more

Southampton
Ukulele Jam



dog show
chris@acnb-church.org



enquiries
philb@acnb-church.org

Parish News

A graphic for Forest Church featuring a teal background with green leaves and black birds. It includes a circular logo with a cross and the text 'AMPFIELD • CHILWORTH • NORTH BADDESLEY'. Four blue circles contain the text: 'Explore faith inspired by creation', 'All ages welcome', 'Relaxed and informal', and 'Dress for the weather'. At the bottom, the text 'FOREST CHURCH' and 'St Mark's Church, Ampfield' is displayed in large green letters.

AMPFIELD • CHILWORTH • NORTH BADDESLEY

Explore faith inspired by creation

All ages welcome

Relaxed and informal

Dress for the weather

FOREST CHURCH
St Mark's Church, Ampfield

We are looking forward to our next Forest Church session on

Sunday 24th May, 3 - 4pm,
at St Mark's.

Forest Church is held outside in the church grounds, so please dress for the weather.

Parish News

ST MARK'S MINNOWS

FUN AND FRIENDLY
BABY AND TODDLER GROUP!



TERM TIME THURSDAYS

9.30 - 11AM

COFFEE ON FROM 9.15!

What's on in the Parish every week

St. Mark's

St. Mark's Minnows

Thursdays in termtime St. Mark's Room 9.30 - 11am

All Welcome! Kettle's on from 9.15.

St. Mark's Fridge Magnets and cards

Jennie has made cards and fridge magnets with a picture of Ampfield Church - £1.50 for a card, or £5 for 4 cards, and £2 for a fridge magnet. Available to buy at Ampfield Market or in church.



All Saints

Digital Hub - All Saints: Wednesdays 10.30am - 12 noon

We have expanded Wednesday mornings to include some support for those who have laptops, tablets or phones and need a little extra help on how to use them.

Social Hub - Wednesdays at All Saints 10am - 12 noon

Have a go at some crafts, do jigsaws or just relax with a book that has been borrowed from the Community Library (also open on a Wednesday morning) or just sit and chat. Free drinks and biscuits and sometimes other treats!

Welcome Cafe at All Saints Thursdays at 10am

The café is for any and everyone in the community, we particularly welcome those who find themselves lonely or bereaved.

Sunshine Saints

Fri: 10:00am - 11.30am at All Saints (term-time only)

Sunshine Saints is the toddler and baby group. It is an opportunity for the children to have fun playing together. There are snacks for the children and tea and coffee for those who accompany them, suggested donation: £2.

What's on in the Parish every month

St. Mark's

Friends for Lunch: 3rd. Wednesday of the month

please contact Pam on : Tel. 02380 411146 or
Email - pammorf@virginmedia.com to book your place.



St. Mark's Stall at the Ampfield Market 1st. Saturday of the month

If you have anything to donate, please contact Chris on 01794 367104. We are happy to collect. Thank you for your support!

Pam and Chris

Pilgrim Course: 2nd Saturday of the month



This is an opportunity to ask questions about faith. Our ethos is that we are exploring together, and there are no wrong answers - all are welcome to this relaxed and friendly group. We continue to meet in St. Marks church room monthly. The Pilgrim groups are always accompanied by cake!

All Saints

Pilgrim Course: Wednesdays 8th and 22nd April 2pm - 3.30pm

Every second and fourth Wednesday afternoon.

From the Archives



Ampfield W.I.

At the April meeting, President Delia Baker welcomed a number of younger visitors and a prospective new member. Dates were announced for the Group meeting and the skittles competition, in which Ampfield are one of the finalists. Members were reminded of the Festival of Europe evening at the Great Hall, Winchester Castle, on 30th June.

Elizabeth Vicary gave an interesting talk about the history of aromatherapy. She explained how therapy with the use of essential plant oils can bring relief from a wide range of conditions and improve health. There were various oils and books on display.

There were a number of entries in the competition for 'a perfect bloom from your garden'. Mrs Vicary was asked to judge, and declared Joan Hatley to be the winner, with her entry of a viburnum bloom. Refreshments were provided by Margaret Lambert and her daughter and by Vi Bignell, and the mystery parcel was won by Norah Loader.

Doreen Della-Valle.

The Mid-Hants Corn Dollies invite you to an open morning in the Parish Room at Hursley on Tuesday May 19th from 10 am to 12 noon.

This group meets regularly on the third Tuesday of every month to forward the ancient art of corn dolly making. They will be demonstrating the craft and displaying examples of their work.



Ampfield Parish Council March Council Meeting

At its March Meeting, the last before the Council's Annual Meeting in May, the Chairman, Miss J. M. Cornwell began by thanking Councillors for all their hard work over the last twelve months. The final arrangements for the Parish Assembly to be held on Monday, 30th March 1992 in the Ampfield W.I. Hall were discussed. The Council's first newsletter, which includes details of the Parish Assembly, will be circulated before that date.

From the Archives

In a letter from the Area Surveyor regarding the traffic improvement suggestions in the Village Appraisal that were prominent in the discussion at the Council's January Meeting, Councillors were informed that the County Surveyor was at present consulting the various specialist departments in order that they can co-ordinate a response. With reference to the Hursley Road/Hiltingbury Road Traffic Signals which have recently been modified, members could not agree whether the new phasing was an improvement or not. Following an approach by a local resident on problems now occurring at the Hursley Road/Hocombe Road Crossing, it is hoped to arrange a site meeting between Councillors and the County Surveyor.

Councillor Mrs P. Harris, who organised the Ampfield Countryside Heritage Area's roadside planting of wild flowers by the Potters Heron Hotel on Saturday 14th March, reported that the response for volunteers was very good, and that 2000 plants were now in place.

Ampfield Parish Council now has two Tree Wardens after the official appointment of Mr Ian Roach by the Hampshire Wildlife Trust. The Council's other Tree Warden, Councillor Barry Permain, attended the scheme's Introductory Meeting recently. He hoped to be able to put some concrete suggestions before the Council in the coming months.

Concern has been expressed by B.T. regarding the public call box at Ampfield. It would seem that the kiosk is being regularly used as a toilet, causing offence and distress to users and necessitating extra cleaning. It is believed that the seclusion of the kiosk affords privacy for the perpetrator of the fouling. To that end, the hedging between the kiosk and the road is to be cut to a reasonable height to expose the kiosk, hopefully preventing recurrence of the problem.

The Annual Meeting of the Parish Council will be held on 18th May 1992 in the W.I. Hall at 7.00pm.

Answers to Ron & Stella's Quiz Night

1. Bat
2. Giraffe
3. Seven
4. Uranus
5. Sixteen
6. Diego
7. Titanic
8. Pockocks
9. New Orleans
10. Platypus



**“That men do not learn very much from
the lessons of history is the most important of all
the lessons that history has to teach”**

Aldous Huxley

**“It is not true that suffering ennobles
the character; happiness does that sometimes,
but suffering, for the most part, makes men
petty and vindictive”**

W. Somerset Maugham

**The
Ampfield Market**
(Established in 2000, now in its 26th year !)



Saturday 2nd May
From 10am to 12noon
in Ampfield Village Hall
(SO51 9BJ)

Our Market has a great reputation, we regularly sell fresh fruit and veg supplied by Hansards in Awbridge and delicious bread and cakes supplied by Matts Bakery. Honey, preserves, plants and fresh flowers. Cards, wrapping paper and books. Collectables, unusual crafts and jewellery. Clothes, toys and puzzles. Bric a brac, seasonal treats and much, much more!

We serve fresh coffee and a wonderful selection of cakes throughout the morning.

Come along with friends and family to enjoy this Special monthly community event.

Parking and admission are always FREE.

All proceeds support the Village Hall. Registered charity no. 1057353
Contact Julie on 023 80254587 or Julie@ampfield.org.uk for table bookings etc.

Next date. Saturday 6th June

WHAT'S ON IN THE AMPFIELD VILLAGE HALL SPRING 2026 - JOIN IN ONE!

MONDAYS

PILATES WITH HANNAH – Two sessions in the morning.
9.15am to 10.20am & 10.30am to 11.35am. Mixed ability mat class.
Details at www.pilateswithaplomb.com

AMPFIELD PARISH COUNCIL regularly meet on a Monday evening for their ordinary meetings, planning meetings and other meetings.

NB. NEW WEBSITE ADDRESS www.ampfieldparish.gov.uk

TUESDAYS

AMPFIELD BRIDGE CLUB is a very popular club playing friendly duplicate bridge. It meets every Tuesday evening (except at Xmas time) from 7pm to 10pm. If you require a partner or want more information contact Mel Cook on 07889 689302 or email melcook@sky.com . New members always welcome.

WEDNESDAYS

NEW CLASS! YOGA MORNING with Yoga by Gaynor –10.00 to 11am for details see Friday below

1st AMPFIELD BROWNIES meet every Wed. evening during term time. 6pm to 7.30pm Tel. Sue Moore 01794 523947

ROMSEY MODELLERS Build model kits? Want to get more from your hobby? Join this club on the 1st and 3rd. Wed. of each month 8pm to 10pm.

www.romseymodellers.co.uk

THURSDAYS

AMPFIELD ART GROUP meets Thurs. afternoons during term time 2pm to 4pm. Very friendly atmosphere. Beginners and those wishing to develop their skills welcome. Contact email: Julie@ampfield.org.uk

PILATES WITH HANNAH PLOMB - TWO SESSIONS.

6.15 to 7.20pm (improvers and Intermediate) &

EXTRA CLASS: 7.30 to 8.35pm (Beginners).

Mat classes. For details: see Monday above.

FRIDAYS

YOGA ON FRIDAY MORNINGS with YogaByGaynor 9.30 to 10.30am

All levels, Gentle, Vinyasa Flow Yoga. All welcome. Facebook:

@yogaByGaynor OR Email: yogabygaynor@yahoo.com

SATURDAYS

VILLAGE MARKET (IN ITS 26th YEAR!) First Saturday of every month 10-12noon (except Jan. and Aug.). Entry free. Regularly on sale are fresh bread, rolls, jams, chutneys and pickles, cakes, plants and fresh flowers, cards, books, antiques, unusual crafts, jewellery, toys, seasonal surprises, bric a brac etc. Fresh coffee and delicious cakes are served all morning in the Garden Room. Interested in renting a table? Ring Julie on 02380 254587 or email Julie@ampfield.org.uk. This is a great event to meet up with people.

CARD MAKING WORKSHOP WITH VANESSA. A range of crafts taught, meets monthly, normally on the second Saturday of each month from 10am to 4pm. A very relaxed day and delicious coffee provided. Details from Vanessa 01794 515490 or email Ampfieldcards@gmail.com .

SUNDAYS

SEWING SUNDAYS WITH MICHELLE. Small group of crafters, who meet once a month on a Sunday. Open to all who want to bring along their dress-making, knitting or other textile projects. If interested email Michelle michelleewaters@gmail.com Friendly group, offers advice, help pinning and fitting toiles + natter & cuppa

WEEKENDS: THE ORTHODOX PARISH OF St. SILOUAN of Mt. ATHOS now normally hold their services here **every 1st weekend of the month.** For details see their **new** website www.silouan-soton.org or ring 07518 417052 (English & Russian). A friendly non-political church. All welcome!

*For general enquiries and hall bookings tel. Martin Hatley 07970 501050
Or visit our website: www.ampfieldvillagehall.org.uk Or E mail:
info@ampfieldvillagehall.org.uk*

Ampfield Art Class Gallery

Julie Trotter's
Art Class

takes place on
Thursday afternoons, from 2-4pm at the Village Hall



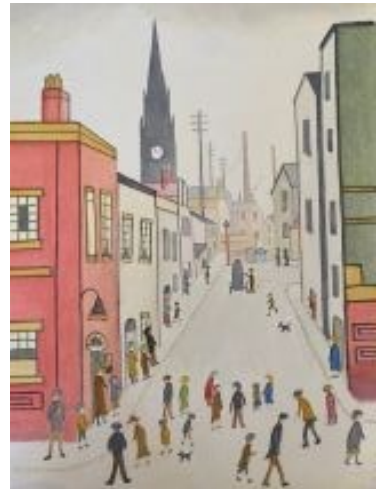
Red Tulips - Christina-
watercolour pencils



Vase of Tulips -
Alison , watercolour.



Magical Extension -
Andy , watercolour and pen .



The Organ Grinder -
Nick, watercolour .

Ampfield Art Class Gallery



Autumn river - Sharon , oils .

Corn Street in Bristol -
Karen, acrylics.



The White Horse, Ampfield, in bygone
days - Nick, watercolour.

Socks



Ordered to sort my sock drawer got me pondering on why some socks of the same pair have holes in whereas the other not? This then led to the dilemma of whether to chuck the matching pair or make do till the other catches up, risking the chaffing a hole is likely to cause on a good stiff walk. Of course, the thought of mending the hole in these “throw away” times was beyond my ken for reason that I was never taught how to do it - yet alone to know what a darning needle and mushroom looked like.

The issue was exacerbated by them being jolly patterned or singular coloured socks - to match them with another unholed sock was tricky. Should one be brave enough to wear odd socks, if not why not? Most times socks aren't noticed (unless one wears trousers at half-mast as per Rishi Sunak) and in these times of informality and “expressing one's personality” then who cares?

Perhaps the answer is to wear sandals where socks are said to be a no-no (why?) - if our postie can wear shorts and open shoes year-round without a flinch then perhaps that may be the answer?

Thoughts on a p.c., please.

Charlie Brown



Summer

By Christina Rossetti

Winter is cold-hearted
Spring is yea and nay,
Autumn is a weather-cock
Blown every way:
Summer days for me
When every leaf is on its tree;
When Robin's not a beggar,
And Jenny Wren's a bride,
And larks hang singing, singing, singing,
Over the wheat-fields wide,
And anchored lilies ride,
And the pendulum spider
Swings from side to side,
And blue-black beetles transact business,
And gnats fly in a host,
And furry caterpillars hasten
That no time be lost,
And moths grow fat and thrive,
And ladybirds arrive.
Before green apples blush,
Before green nuts embrown,
Why, one day in the country
Is worth a month in town;
Is worth a day and a year
Of the dusty, musty, lag-last fashion
That days drone elsewhere.

Thought for the Month

by Paul Oliver

Trust is a word often used but perhaps not thought about too deeply until circumstances demand it.

I must admit that I do not think about trust too often, although trust is fundamental to the way I try to live. It is probably more important to most of us than we care to think about at times. Some may say trust is essential and is an argument I find difficult to fault.

The importance of trust comes into sharp focus once it is lost. Trust secures everything we do and drives the relationships we have with others. Like a fine china plate, trust once shattered takes considerable time, effort & honest intent to glue the pieces back into place and may never quite repair the integrity of the fine glaze once enjoyed. You know the cracks are still there even if they can no longer be seen.

My attention was brought to the importance of trust by an article I had read on social media. Some people say they do not use or believe in social media content. That's understandable because there is much which is not to be trusted on many platforms where bad faith actors, ignorance and misinformation often abound. But not all. There are gems to be found, sometimes of wisdom or of intelligent observation, sometimes uplifting and joyful. It makes sifting through the dross worthwhile.

Cont. ...

...Cont.

According to the World Happiness Report, Finland has for nine years running been adjudged to be the happiest country in the world. How that judgement was arrived upon was not provided, but a reason given for Finland's happiness had a certain ring to it that I was comfortable to accept. How can it be that Finland (along with other countries in northern climes) achieves such happiness? With a poor climate, long dark winters, an affection for alcohol and an unenviable record of suicide, one could expect Finland to be dragged down in the happiness stakes. But not so.

Apparently Finland enjoys an inherent level of trust which makes life easier. People trust one another, they have high levels of trust in their Police & Government. This makes relationships, transactions and house purchase more straightforward, reducing administration and legal documentation to a minimum. It also leads to a greater tendency to believe strangers, or so someone from Finland posted on social media, which tempted me to investigate further.

Checking in deep AI mode & reading several published articles gave proof. If you don't trust me (why should you after all, trust has to be earned and a healthy suspicion of social media is wise) then please check for yourself.

Back to the point. I have always found my life to be more rewarding by operating upon a basis of trust. It has rarely let me down while conversely distrust has often led to confusion & poorer outcomes. We all want to be trusted and respected and I believe that can only be achieved if you give trust and respect to others. It's contagious. Trust me.

Paul Oliver



F

riends of
Chapel
Wood
by
Graham Roads

Last month, we started our annual clear up of the pond area. In April, it was very much more of the same. The pond weed is notoriously difficult to clear. It is as



if, as soon as it sees the drag net, it decides to sink out of sight. Normally, it will take us two or three goes to make an appreciable difference. This Saturday, our usual, experienced pond dipper was unable to join us, so the odds on someone falling in the mud looked fairly high.

We used the tried and tested rope and netting method of capturing the weed, which meant one person each side of the pond, effectively dragging the weed to one end or the other as we walked up and down. Bits of the walk can be quite exciting because, until each foot lands, you never quite know whether it will land on solid ground, in mud or in the water. Once the dragnet gets to the end, we then descend on the contents with plastic lawn rakes, enthusiastically dragging out as much weed as we can. We managed to wander up and down the banks about a dozen times, each time followed by the rakers busily extracting the weed.

Cont. ...

...Cont.



Over the course of the morning, we only had one casualty, although that, (sadly), was unspectacular. We managed to clear a lot of the weed and, as a result, the amount of air, light and sunshine that can now get into the water has been increased. This should help the residents as they go about their daily

activities. Incidentally, in terms of residents, we spotted a small fish and something that could have been a tadpole. Great excitement all round and a good topic of conversation over coffee - “Where did that fish come from?”

If you fancy the idea of joining some like-minded neighbours for a few hours once a month, just turn up in the St. Mark’s car park at 09:45 on the second Saturday of every month. The Friends are a good bunch. Tools are provided. It is a good way to have a bit of fun and help our community at the same time.



Graham Roads

A Prayer for Christian Aid Week

Loving and generous God,
You are the giver of life and the source of all hope.

In this week of compassion and action,
we lift before You our neighbours near and far,
especially those facing poverty, injustice, and the impacts of
a changing climate.

Bless the hands that give,
the voices that speak for justice,
and the hearts that long for a fairer world.
And that seeds of kindness may grow into harvests of peace.

Guide us to live simply, to share generously,
and to walk humbly with You,
until Your kingdom of love and justice is known on earth as in heaven.

Amen.

Christian Aid Week is a powerful expression of what can happen when compassion leads to action. It's our shared moment to come together - across churches, communities and households - to stand alongside people living in poverty around the world. For one week each year, thousands of people across Britain and Ireland give, fundraise, pray and act together. Together, those actions make change possible.



CONTRIBUTIONS and CONTENT

DONATIONS :

Sort code: 82 12 08 Account No: 40239302
Account Name: ACNB PCC / Reference: Magazine

ADVERTISING

Please send to: Phil Budden Tel: 07799 435 715
Email: philb@acnb-church.org

Application for designs and rates for both commercial and charity advertisements will be agreed before submitting copy/drafts for inclusion as JPEGs in high resolution not PDFs or for any graphic design work that you may require to be published. The quality, copyright and content are the sole and legal responsibility of the advertiser.

The views expressed by contributors are not necessarily those of Editors or PCCs nor will they accept any liability for such. They are not responsible for any of the views, statements or opinions expressed in the contributions and any reliance placed on them by the reader is at the readers sole risk.

Copyright is the legal responsibility of the contributor and not that of the editors or PCC with regard to any content. Advertisements are not endorsed or guaranteed on any product or services referred to in, or the content of, such contributions. Every care is taken on content, but possibly there could be cause for misunderstanding that was not intended.

NIGEL GUILDER and family

FAMILY OWNED FUNERAL DIRECTORS

Serving the Community of Chandler's Ford and surrounding area for over 35 years

Nathan House, 27 Hursley Road, Chandler's Ford, SO53 2FS

Nigel Guilder Dip FDMBIFD

Lucy Guilder Dip FD MBIFD

John Firth Dip FD MBIFD

Sarah Hayward Dip FAA

24 HOUR PERSONAL SERVICE

02380262555

www.nigelguilder.co.uk

Pre-paid Funeral Plans Available



Blackwell & Moody Ltd.

**Monumental Masons and
Restoration Specialists**

Jeffrey Higgins

Magdalen Masonry Works,
Alresford Road, Winchester,
Hampshire. SO21 1HE

Tel: 01962 852 476

Fax: 01962 850 865

Email: blackwellandmoody@gmail.com

Why not rent St. Mark's Room?

Wood floored room in open wooded churchyard:

- toilet and kitchen facilities
- vehicle access for organisers
- use of gopack tables and chairs, if required
- small carpark and nearby road-side parking
 - 7.7m x 7.7m
 - £15 p.h.
- use of church may be possible



**Over 100 years
of service
to the local
community**



The Family Owned Funeral Directors

The Peace family have proudly served Romsey and the surrounding area for three generations.



Experienced and Flexible

Honesty, integrity and transparency are at the heart of our beliefs.

We understand every funeral is unique.

Modern Professional Facilities

Our premises have complete facilities on site and our dedicated team are available to support you 24 hours a day.

www.ahcheater.co.uk

ROMSEY
01794 513393

NORTH BADDESLEY
02382 358860

AVAILABLE 24 HOURS

Ampfield Parish Council
Ampfield Village Hall,
Morleys Lane
Ampfield
ROMSEY SO51 9BJ
☎07922 118840

**AMPFIELD to ROMSEY
DIAL A RIDE**

A transport service for disabled or elderly people who cannot use ordinary buses. We provide a door to door service using specially adapted vehicles, for shopping trips and other individual transport needs.

Tel: 01264 356808
www.tvcs.org.uk

Good Roots Garden Services

I have 20 years experience in horticulture and specialise in garden maintenance, small landscaping & repair works' I can either work with you to improve your outside space or offer a 'spruce up' service. Please get in touch so I can come and chat with you about what your garden needs with a free, no-obligation visit.

07749 299227

Tel. Pete Hale on :07749299227 or email pete@goodrootsgardening.co.uk



Talk to us

If things are getting to you. Any time you like, in your own way - about whatever is on your mind.

- Free to phone 116 123

Email: jo@samaritans.org

- Visit us: 13 Upper High Street, Winchester SO23 8UT



**Autism
Ambassador**

Southampton - Hampshire
Isle of Wight - Portsmouth

2026-2027

Jo Hooper

BA (Hons) – RNMH - Reg. MBACP
Autism Ambassador

Counsellor, Psychotherapist, Trainer

Working with your emotions, thoughts and feelings

Contact me for an informal chat today

- Website: <https://positive-people-partnerships.com/>
- Email: jo@positive-people-partnerships.com
- Based in Romsey, Hampshire
- 07450 347910

Computer Problems?



PC, Mac, iPads, Screens
Windows XP 10 & add Menus
Virus Fixes & Tune up
Data recovery, Printing
Broadband & Networking

Independent
Impartial Advice
Home Visits



**Laptops, Macs &
Phones**

**PC's, viruses, Home
setups**

Call Colin:

**01962 713890
07727 481220**

10% off labour with Parish Magazine cover